

ERSATZTEILLISTE

Spare parts list

DE, EN | ZK-55.024/11 | 2023-03

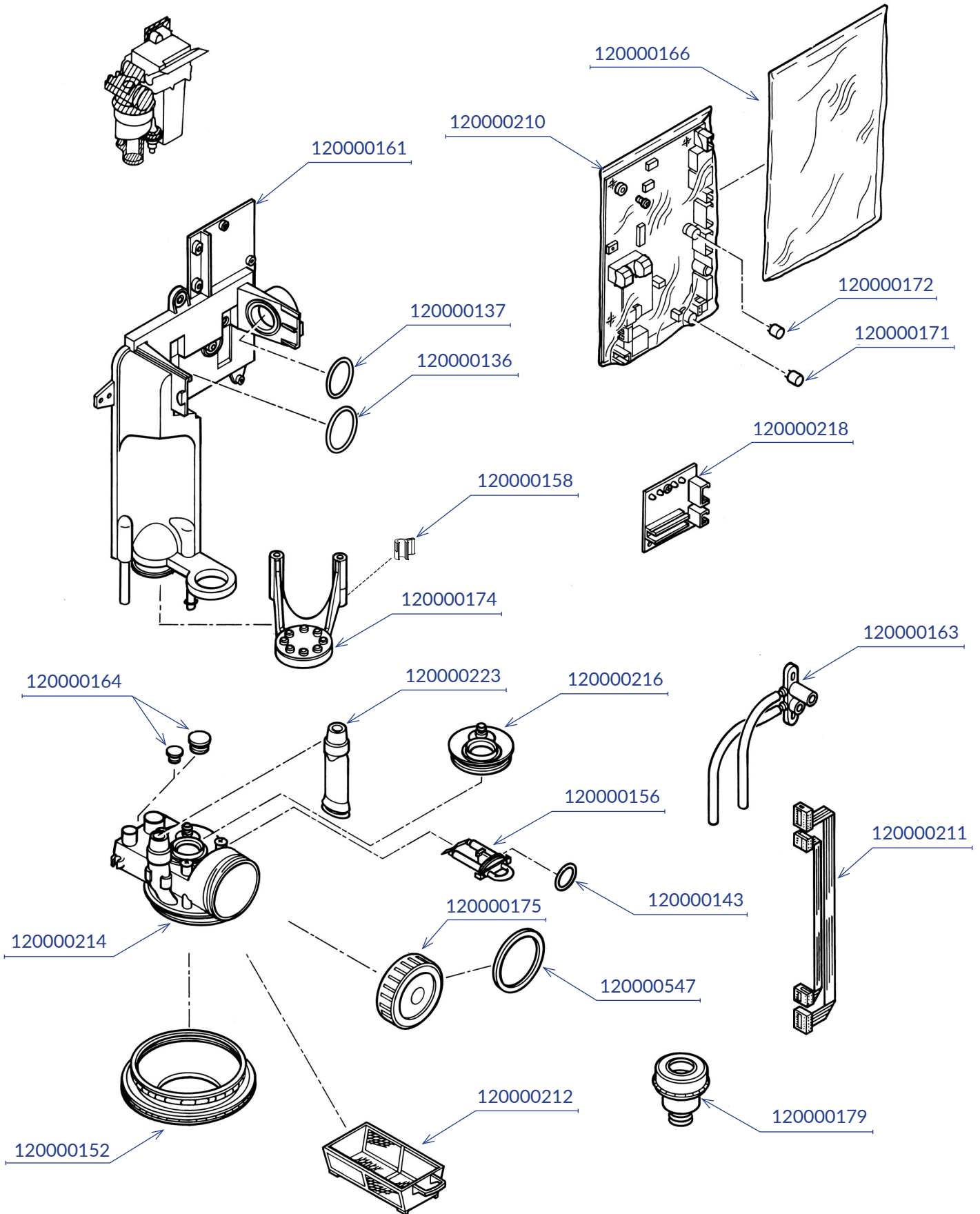
Inhaltsverzeichnis | Table of contents

MULTI SYSTEM TYP 1.....	4
MULTI SYSTEM TYP 1 ECO Light.....	7
COMPACT Dynamic.....	8
Externe Anzeige, Saugstromventil External display, place selection valve.....	9
Einströmventil Spittoon valve.....	10
Externe Pumpe, Anschlussdimensionen External pump, Connecting dimensions.....	11
S1.....	12
H1.....	13
EXCOM hybrid 1s.....	14
EXCOM hybrid 1.....	15
EXCOM hybrid 2.....	16
EXCOM hybrid 5.....	17
VAC 1s.....	18
WEK Light.....	19
WEK.....	20
META Connect.....	22
META Air 24 / Air 24 Light.....	26
META Air Air Light META Air / Air Light 30.....	27
META Air / Air Light / CAM 150.....	28
META Air / Air Light / CAM 250.....	29
META Air / Air Light / CAM 450.....	30
META Air / Air Light / CAM 650.....	31
META Tower 2 / A2.....	32
META Tower 5 / A5.....	33
Service- und Austauschkits Service and replacement kits.....	34

Amalgamabscheider MULTI SYSTEM TYP 1, Modul 1

Amalgam separator MULTI SYSTEM TYP 1, module 1

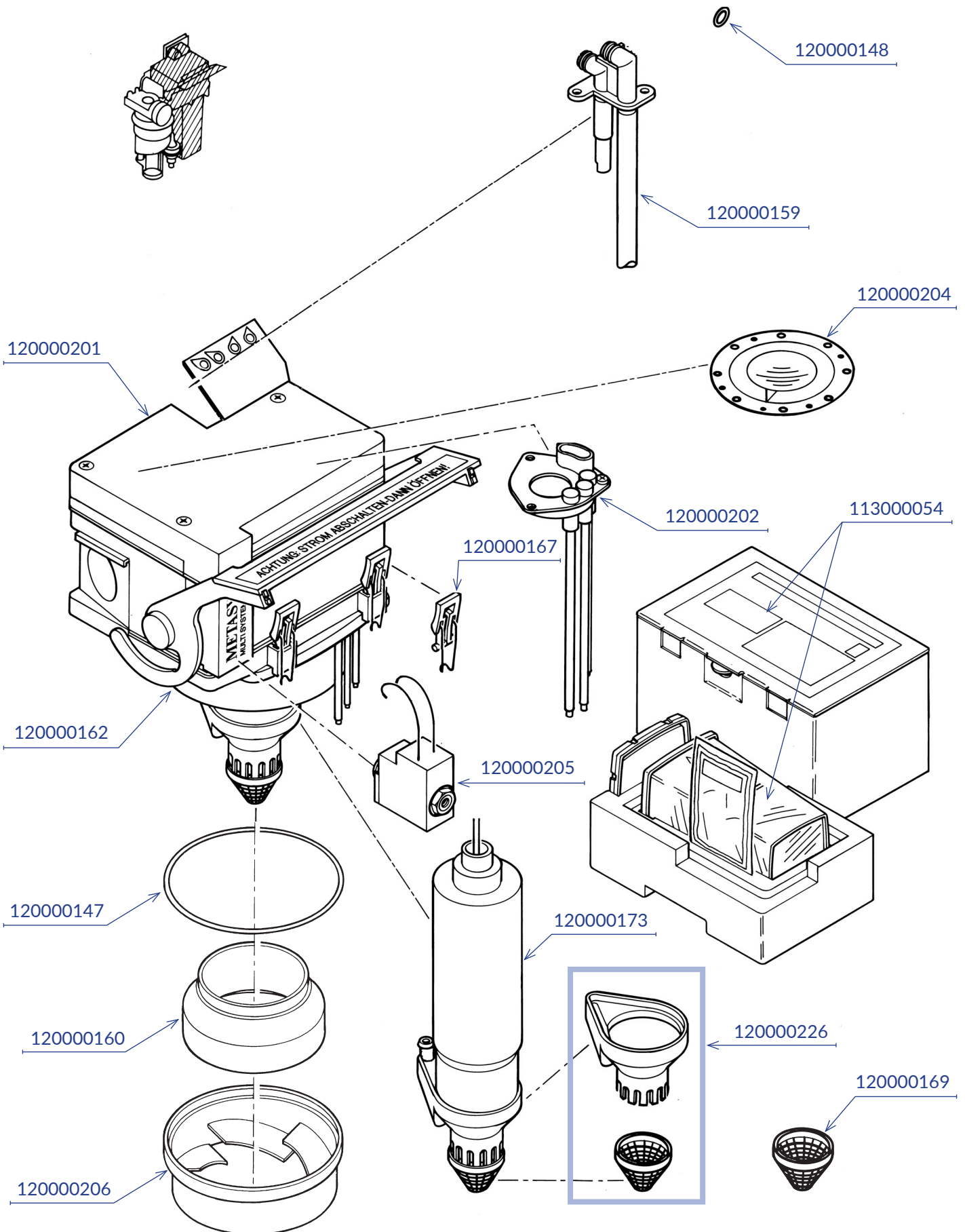
Best.Nr. / Order no.: 120000161



Amalgamabscheider MULTI SYSTEM TYP 1, Modul 2

Amalgam separator MULTI SYSTEM TYP 1, module 2

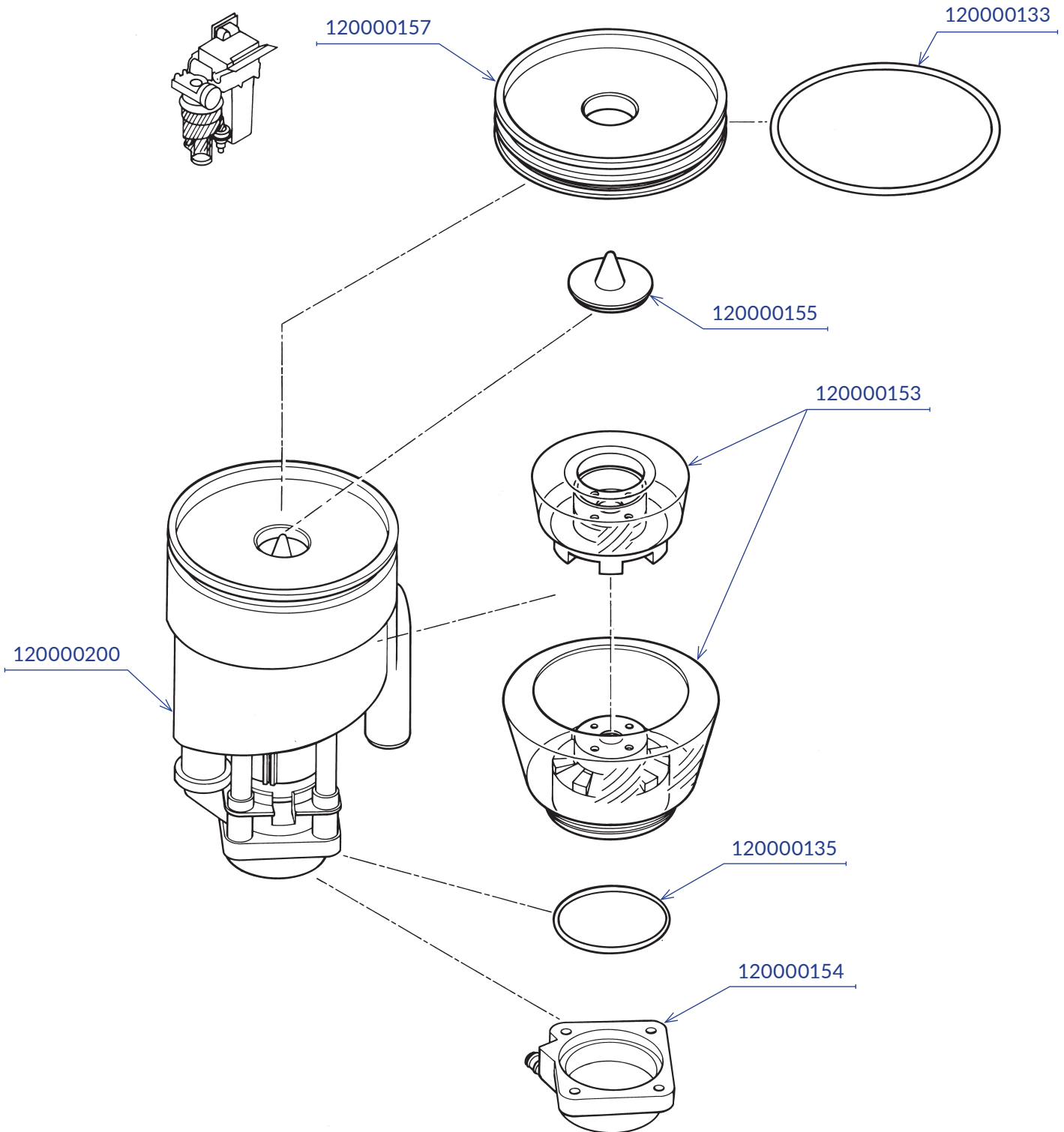
Best.Nr. / Order no.: 120000201



Amalgamabscheider MULTI SYSTEM TYP 1, Modul 3

Amalgam separator MULTI SYSTEM TYP 1, module 3

Best.Nr. / Order no.: 120000200

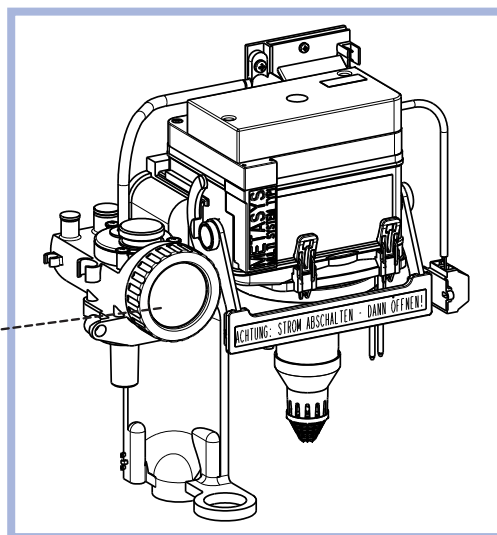
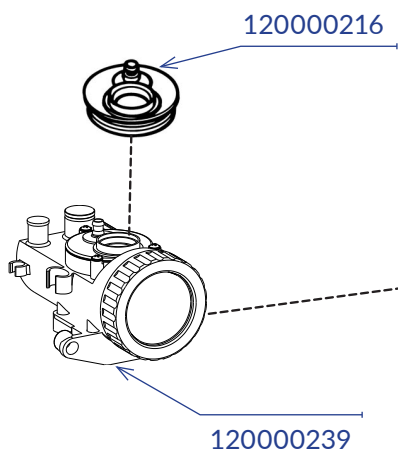
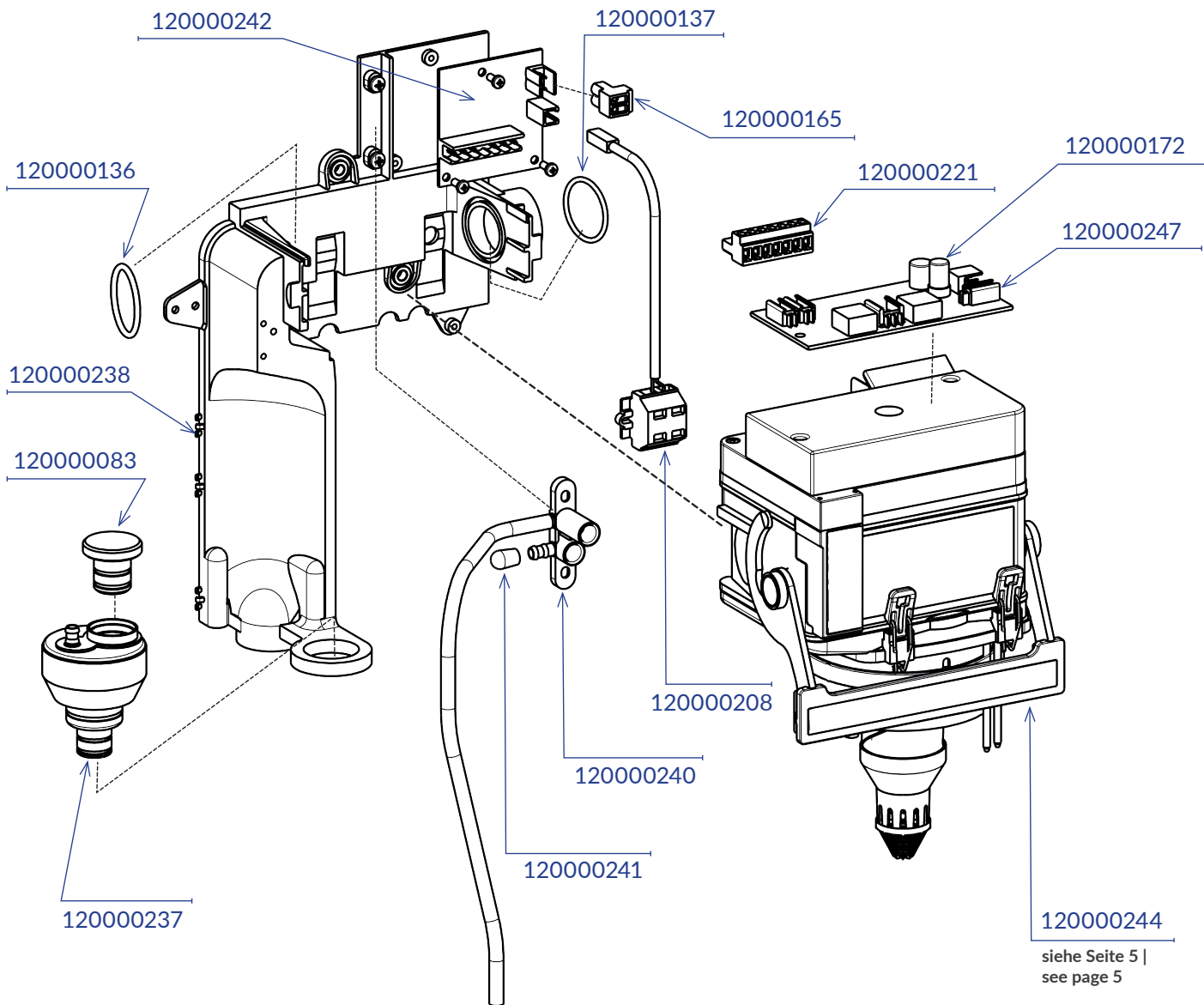


Bestellnr. Order no.	Bezeichnung Designation
120000235	MST 1, 1-Jahres Wartungs-Kit MST 1, annual inspection kit
120000229	MST 1, 5-Jahres Wartungs-Kit MST 1, 5-year inspection kit
120000232	MST 1, 1-Jahres-Wartungs-Kit, Hygiene-Set MST 1, annual inspection kit, hygiene kit

Separierautomatik MULTI SYSTEM TYP 1 ECO Light

Automatic air/water separator MULTI SYSTEM TYP TYP 1 ECO Light

Best.Nr. / Order no.: 103000001

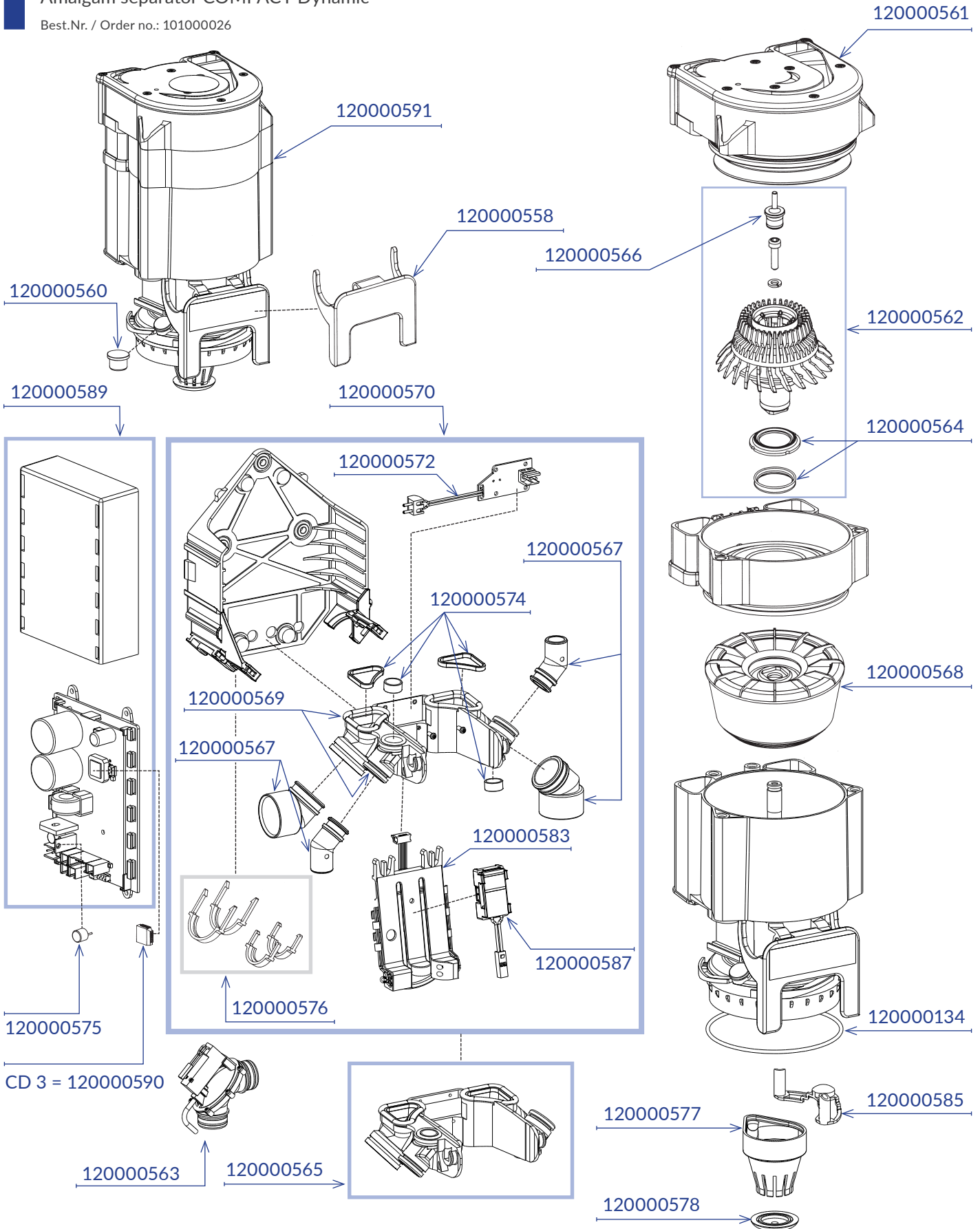


103000002

Amalgamabscheider COMPACT Dynamic

Amalgam separator COMPACT Dynamic

Best.Nr. / Order no.: 101000026

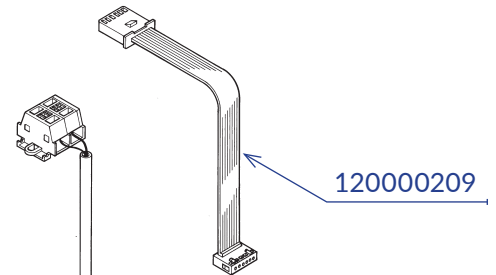
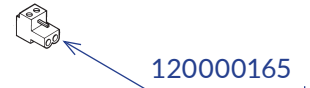
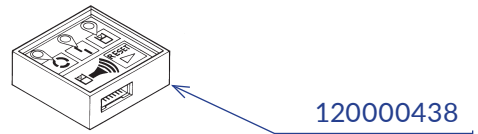
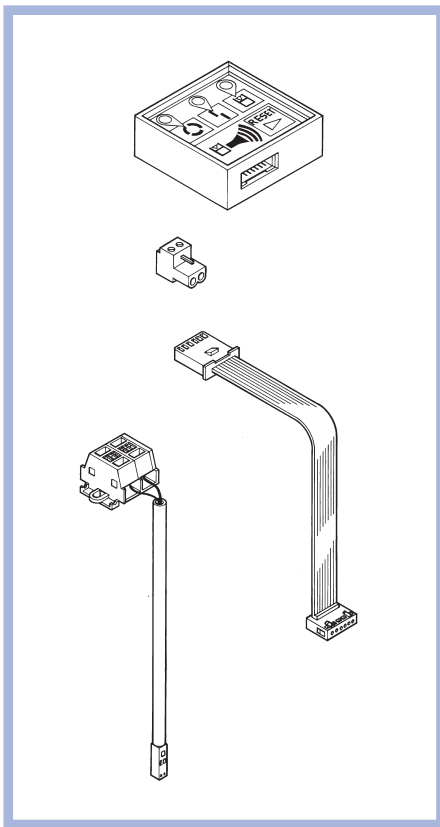


Bestellnr. Order no.	Bezeichnung Designation
120000598	COMPACT Dynamic, 1-Jahres Wartungs-Kit annual inspection kit
120000594	COMPACT Dynamic, 5-Jahres Wartungs-Kit 5-year inspection kit
120000596	COMPACT Dynamic, 1-Jahres-Wartungs-Kit, Hygiene-Set annual inspection kit, hygiene kit

Externe Anzeige für MST 1 und COMPACT Dynamic

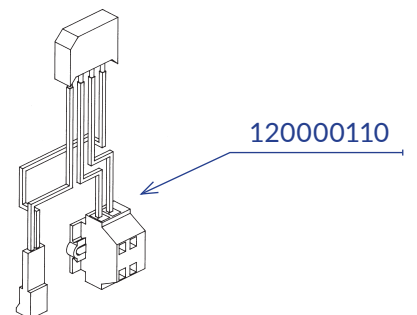
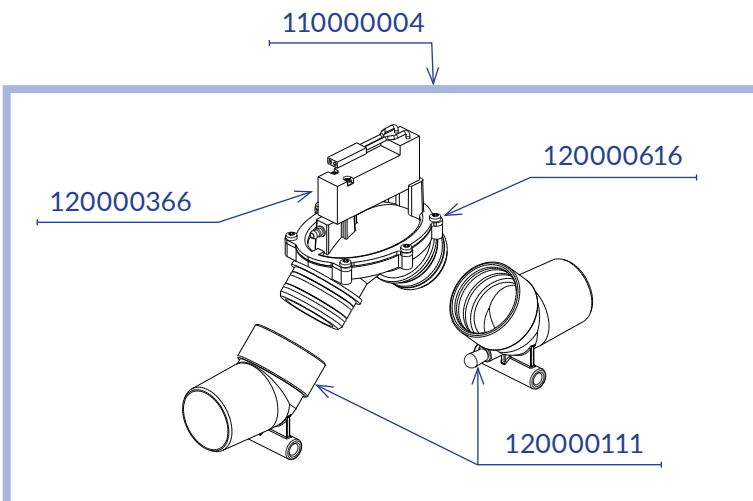
External display for MST 1 and COMPACT Dynamic

Best.Nr. / Order no.: 120000215



Externes Saugstromventil

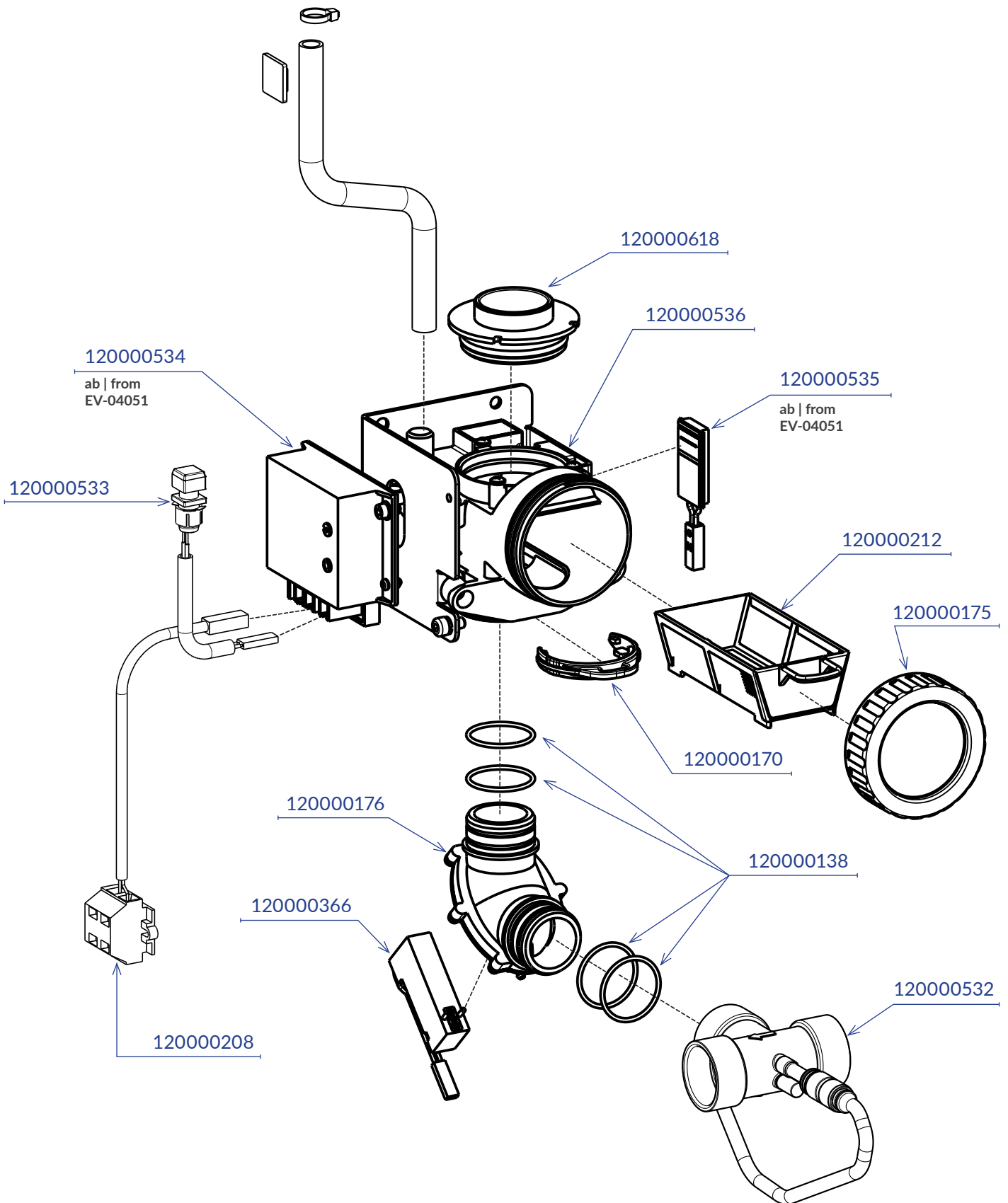
External place selection valve



Einströmventil für Mundspülbecken

Spittoon valve

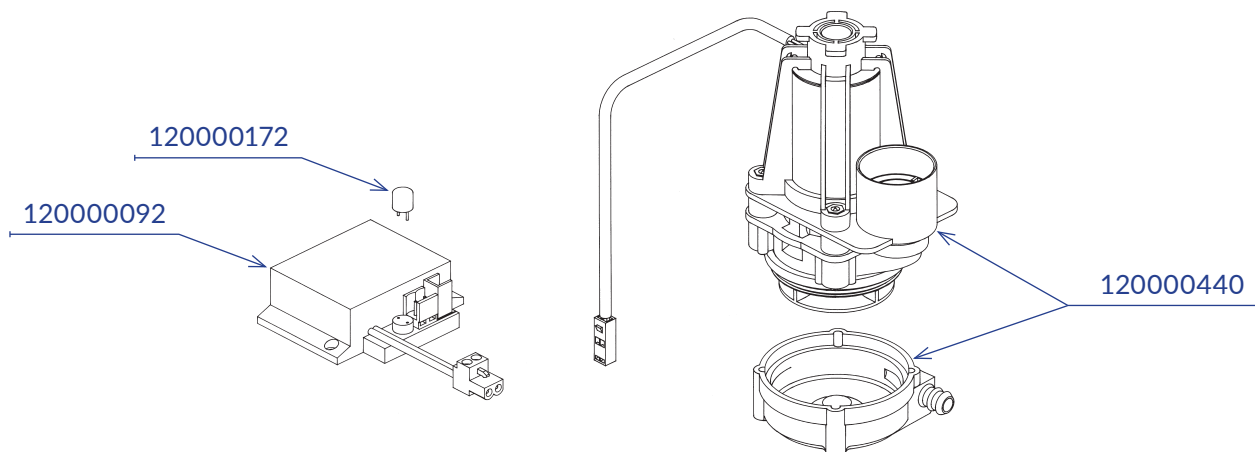
Best.Nr. / Order no.:



Externe Pumpe

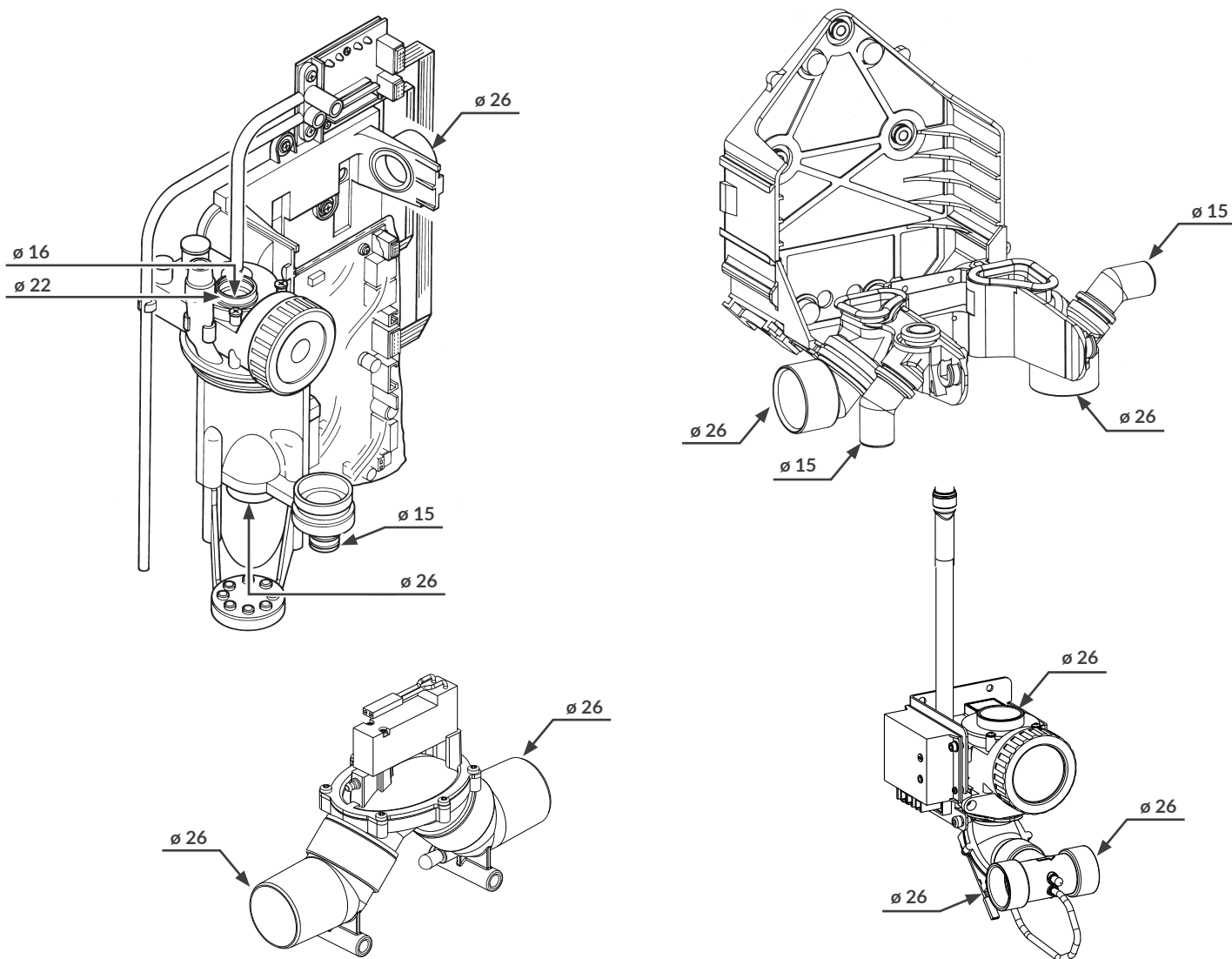
External pump

Best.Nr. / Order no.:



Anschlussdimensionen

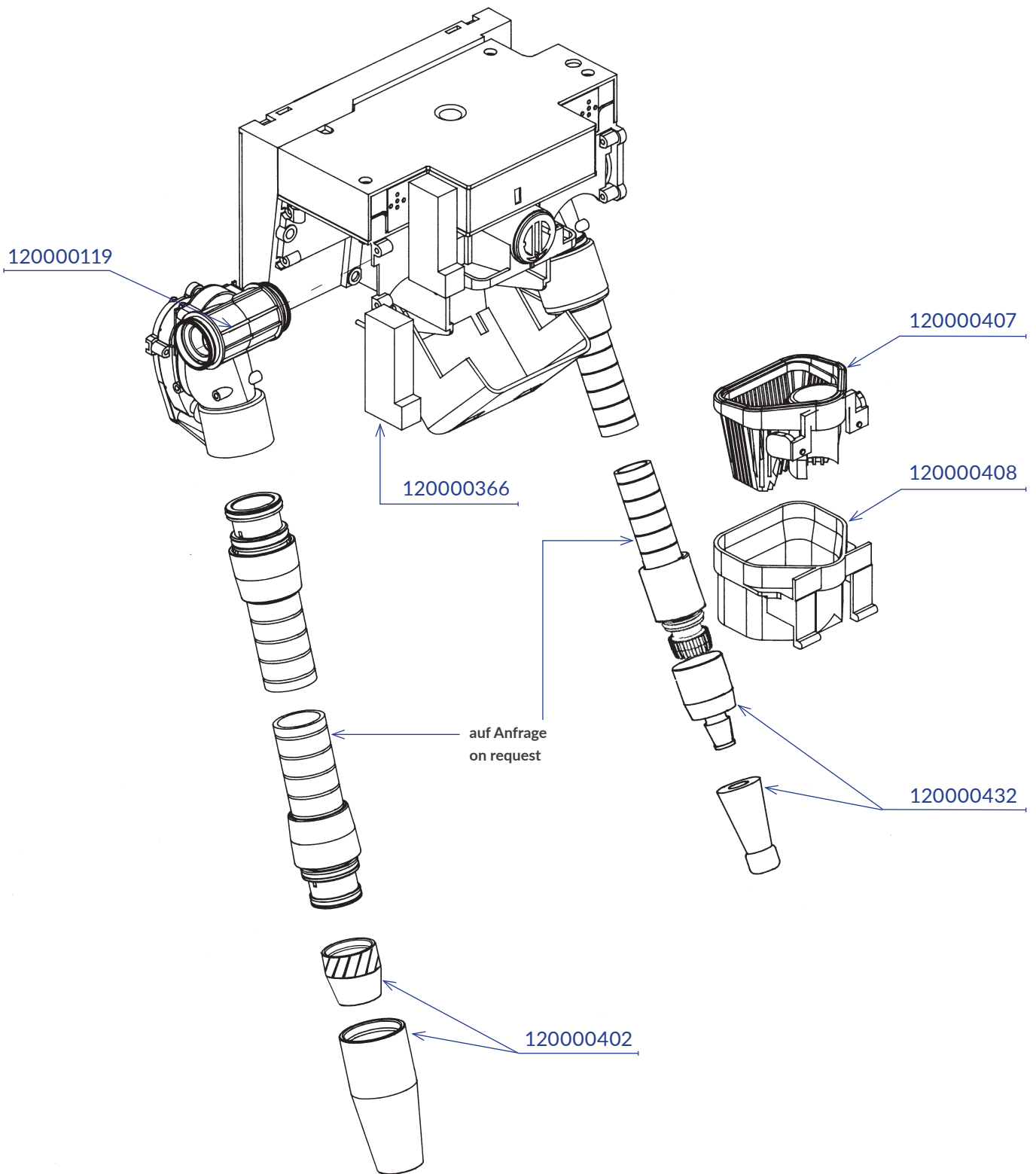
Connecting dimensions



Selektivsystem S1

Selective system S1

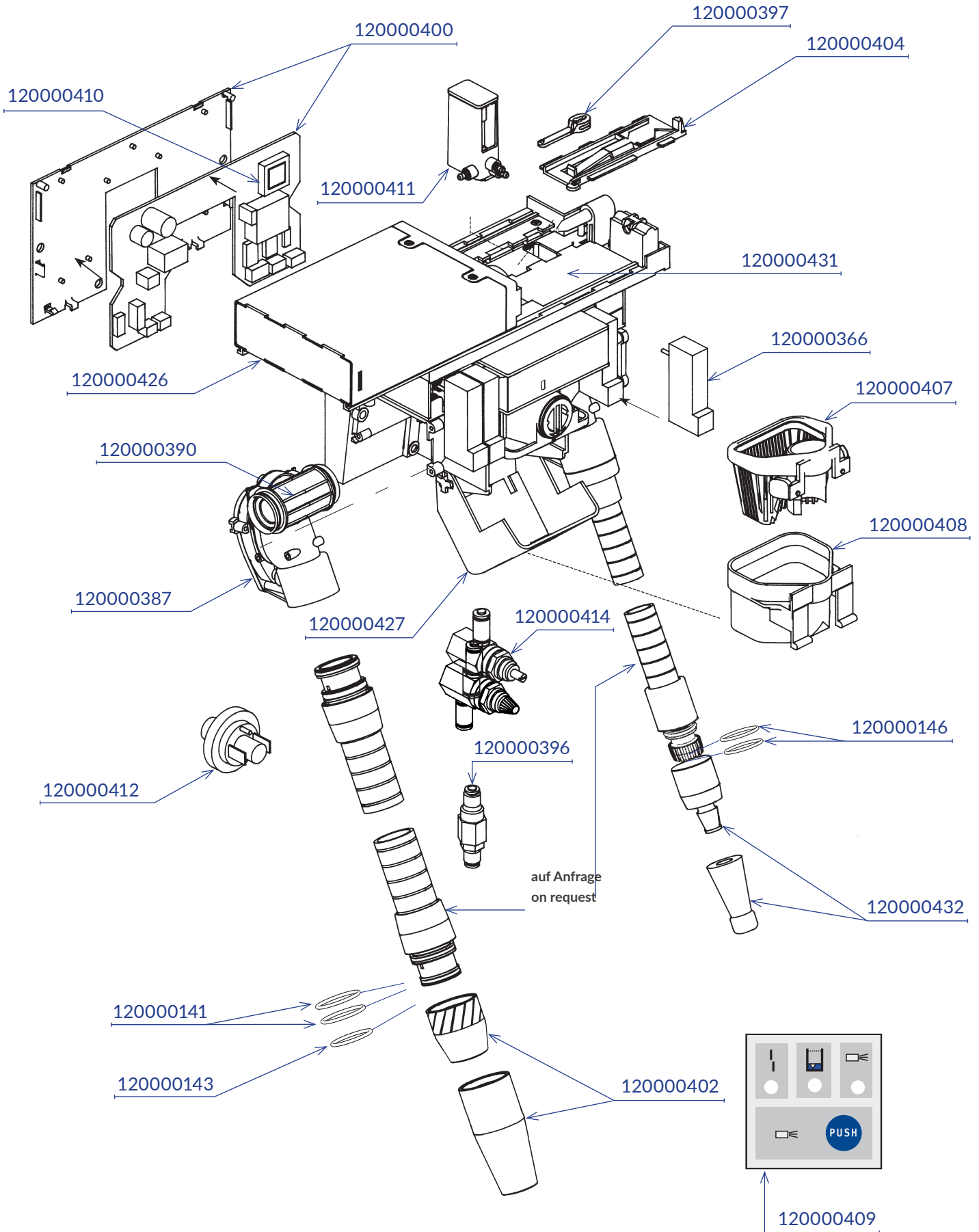
Best.Nr. / Order no.:



Hygienesystem H1 ohne Ablage

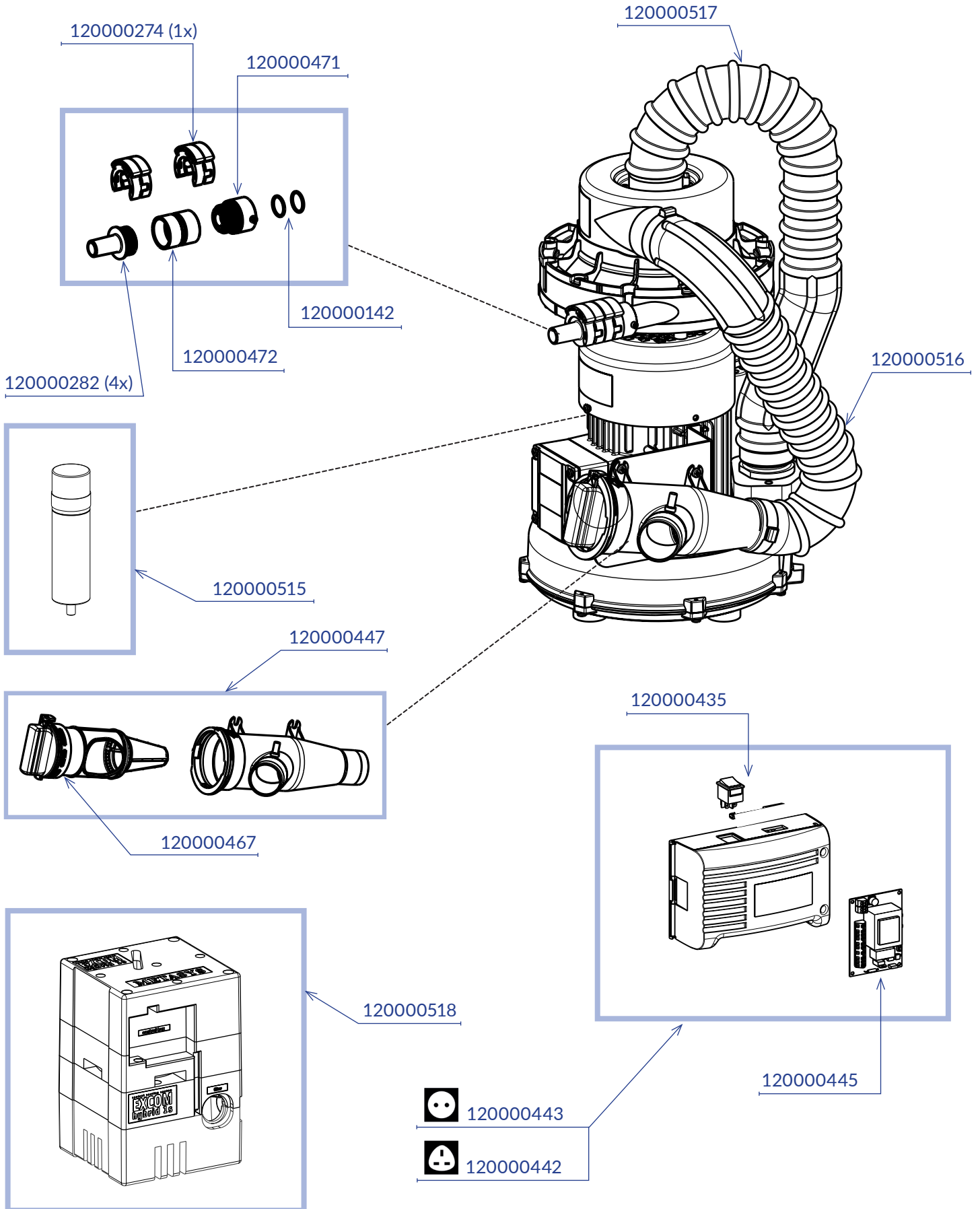
Hygiene system H1 without suction tube holder

Best.Nr. / Order no.:



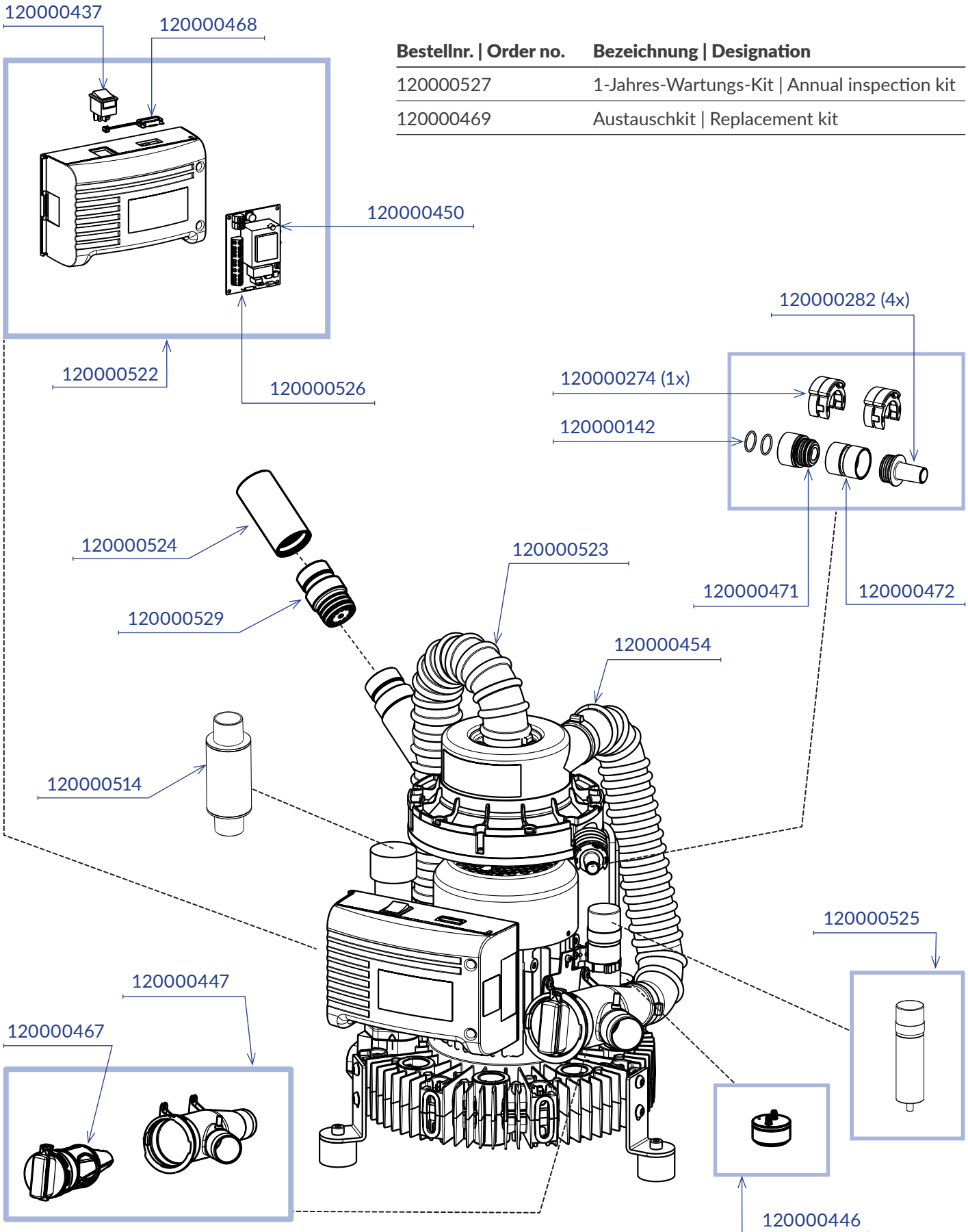
EXCOM hybrid 1s

EXCOM hybrid 1s



EXCOM hybrid 1

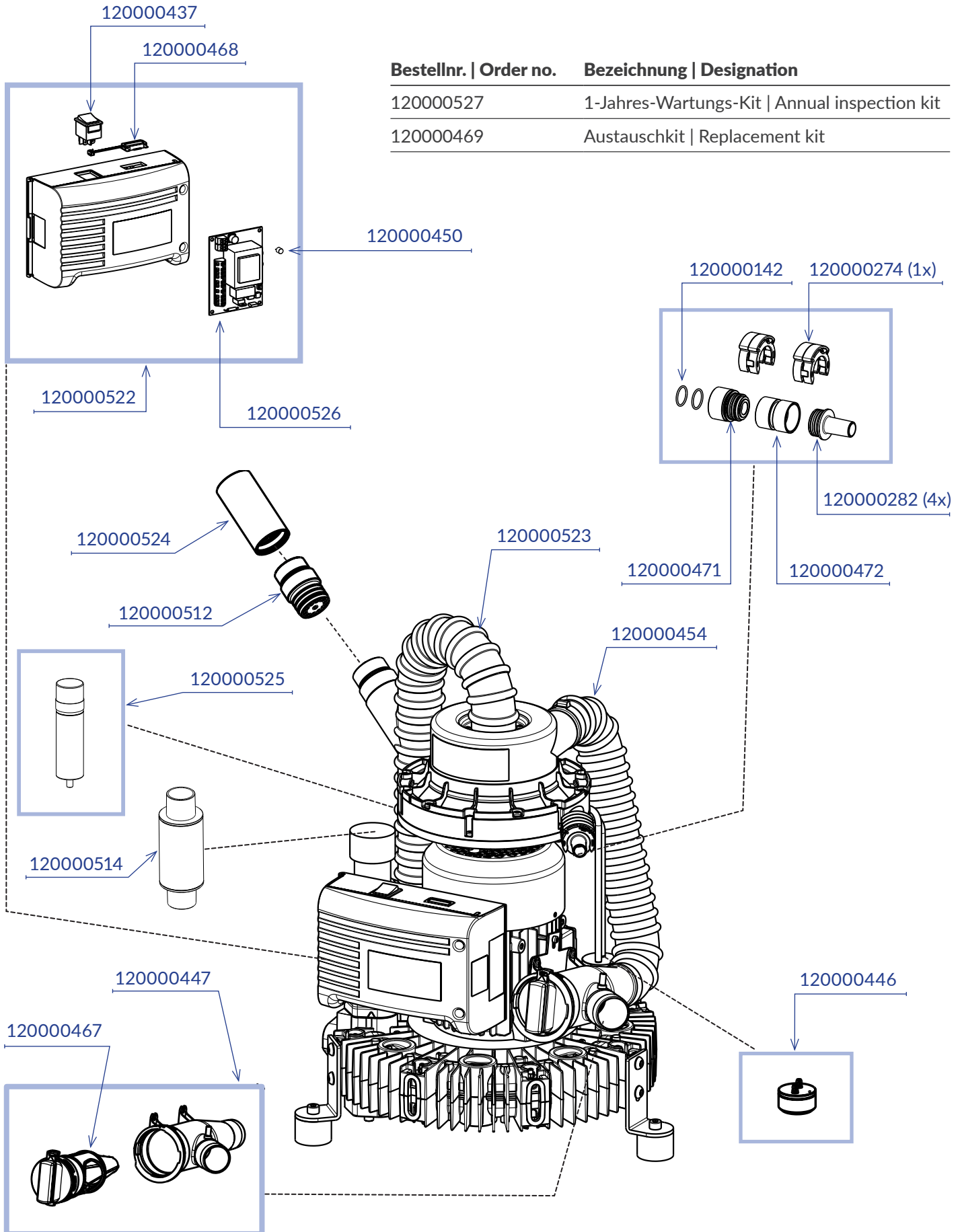
EXCOM hybrid 1



Bestellnr. Order no.	Bezeichnung Designation
120000527	1-Jahres-Wartungs-Kit Annual inspection kit
120000469	Austauschkit Replacement kit

EXCOM hybrid 2

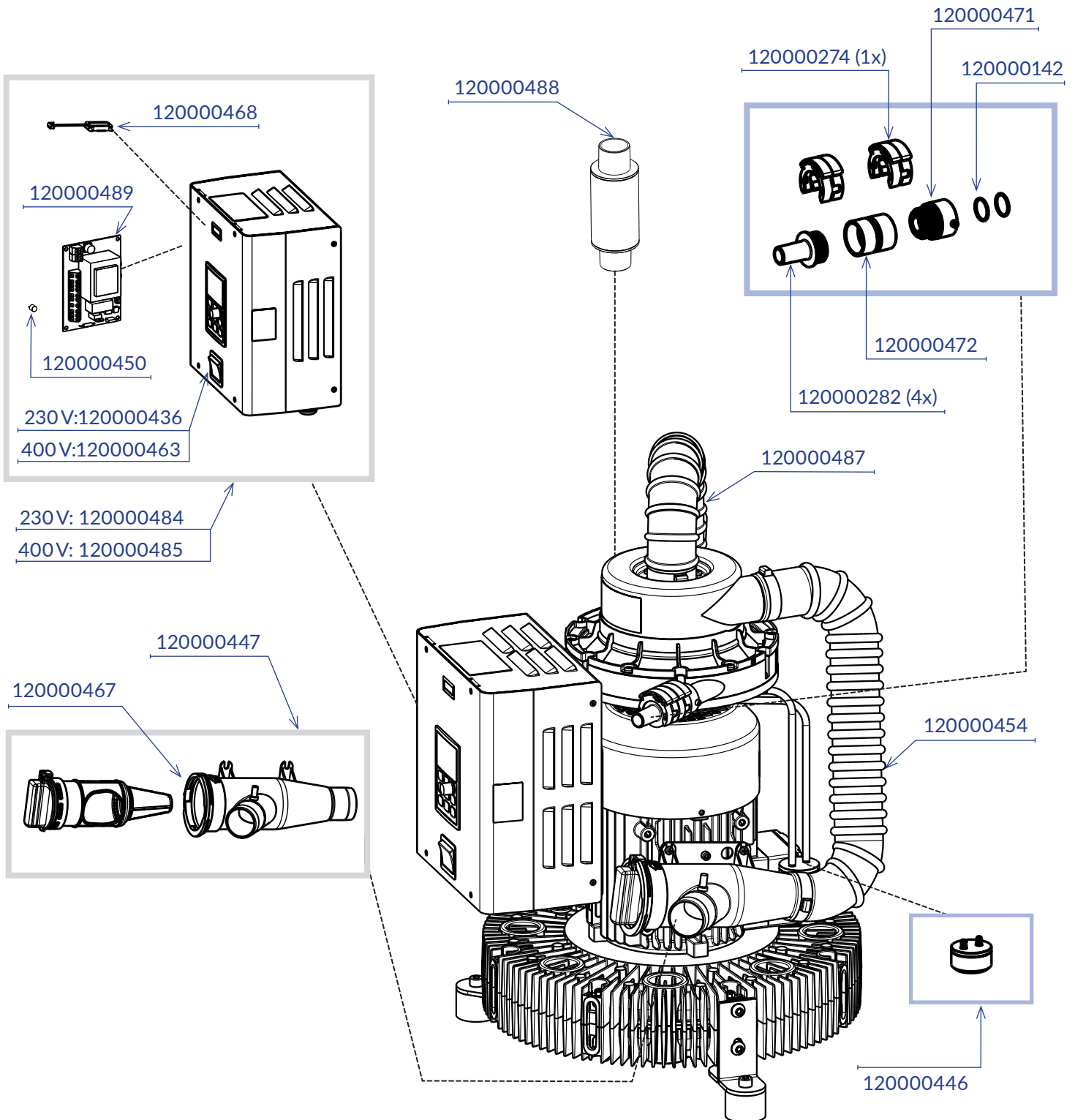
EXCOM hybrid 2



Bestellnr. Order no.	Bezeichnung Designation
120000527	1-Jahres-Wartungs-Kit Annual inspection kit
120000469	Austauschkit Replacement kit

EXCOM hybrid 5

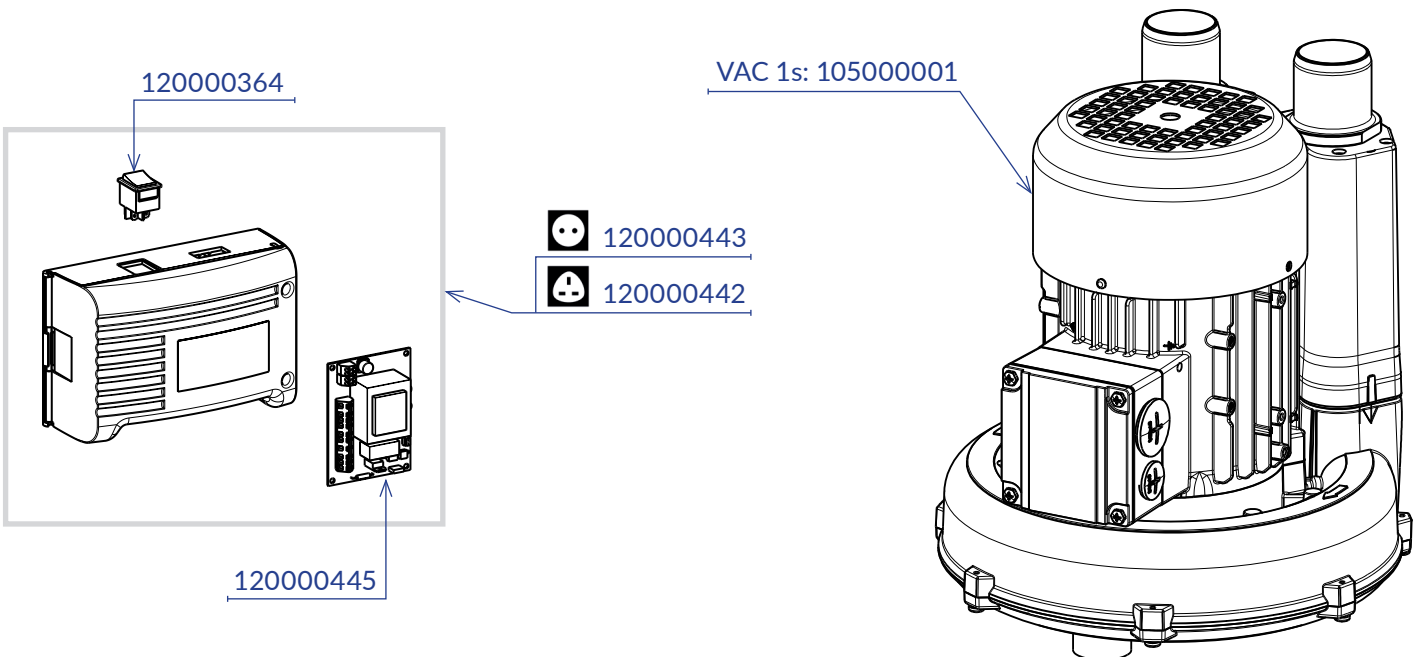
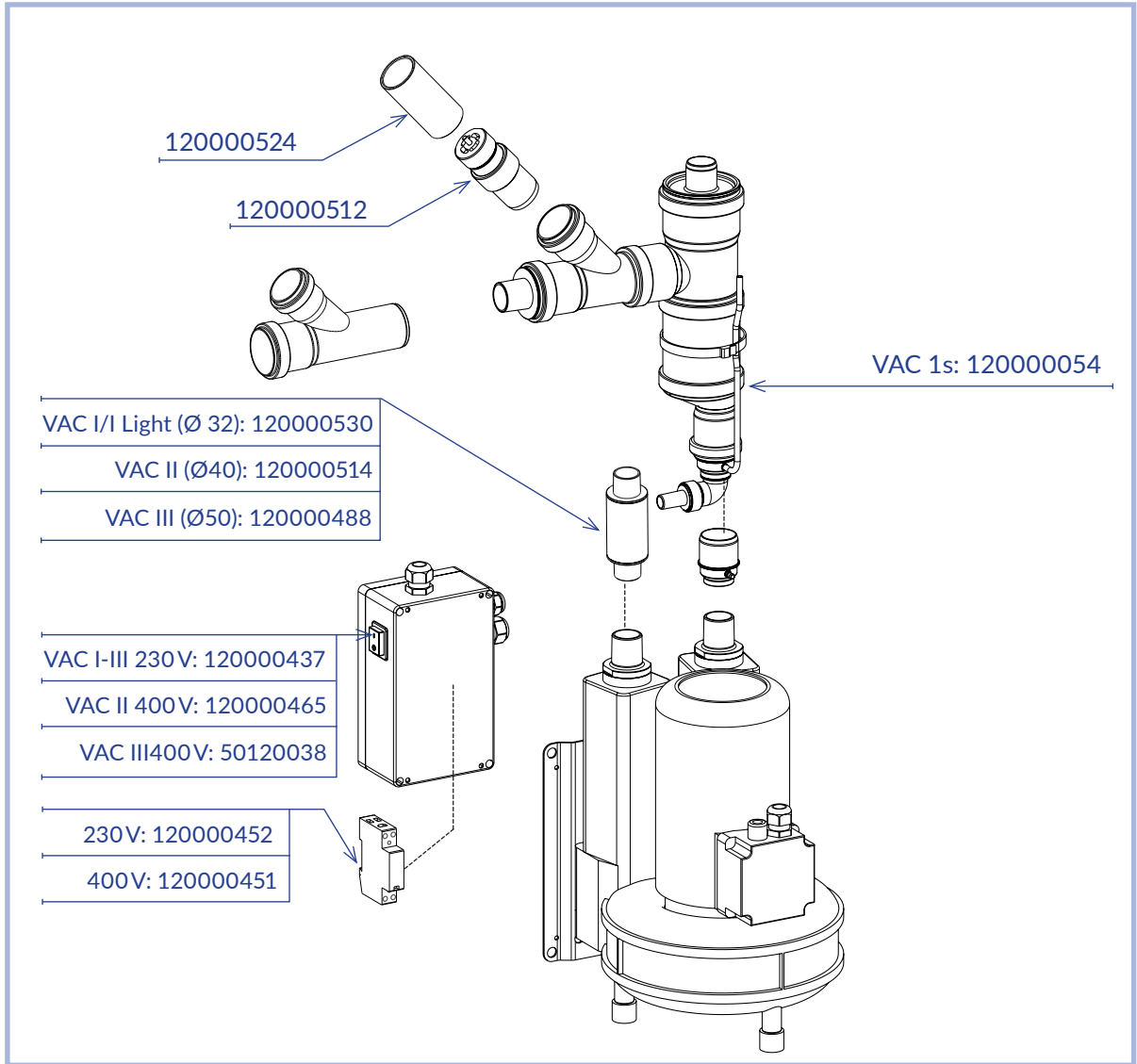
EXCOM hybrid5



Bestellnr. Order no.	Bezeichnung Designation
120000490	EXCOM hybrid 5, 1-Jahres-Wartungs-Kit Annual inspection kit
120000469	EXCOM hybrid, Austauschkit Replacement kit
120000481	EXCOM hybrid 5, Wartungskit Druckabnahme Inspection kit pressure reduction

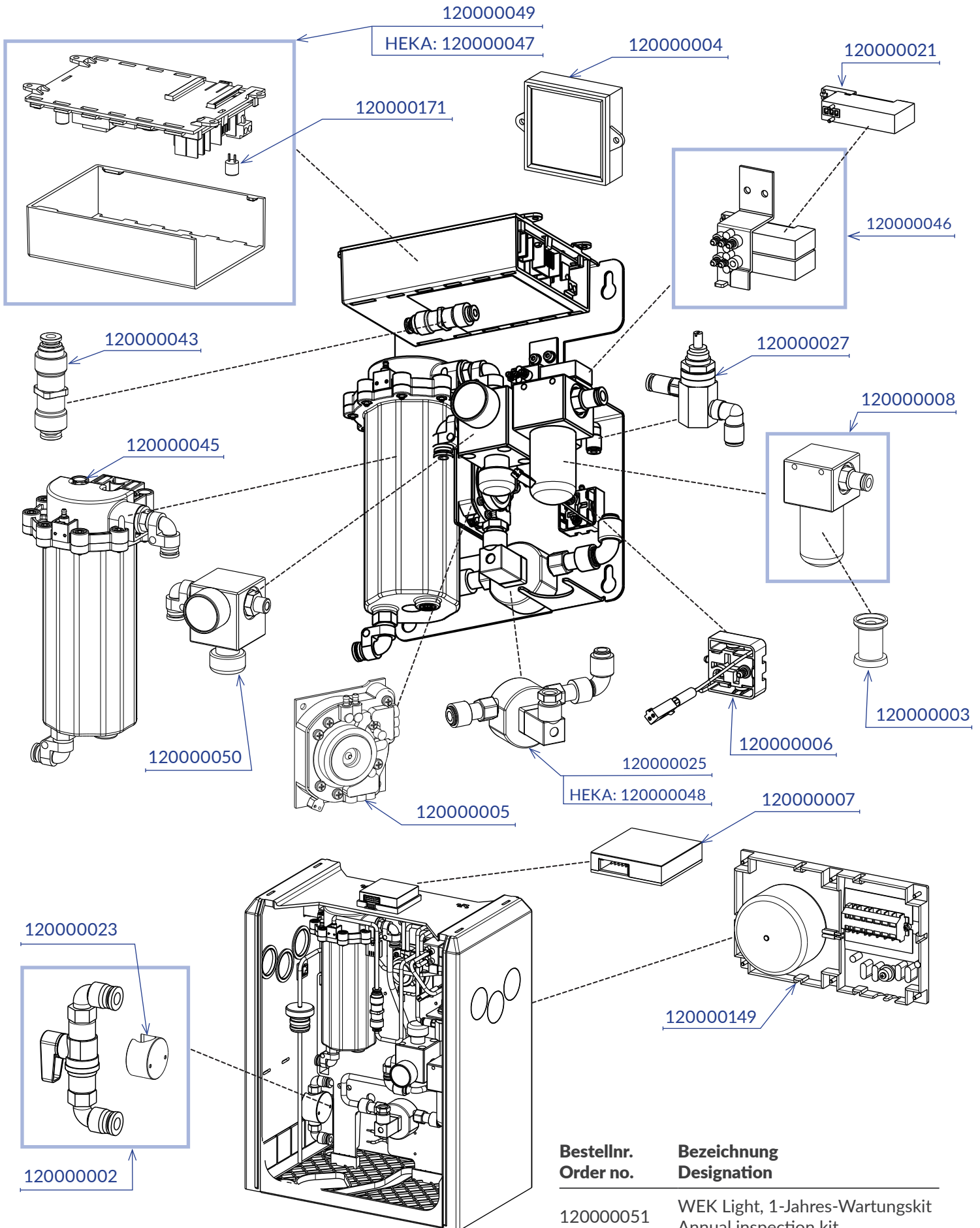
VAC 1s

VAC 1s



Wasserentkeimung WEK Light

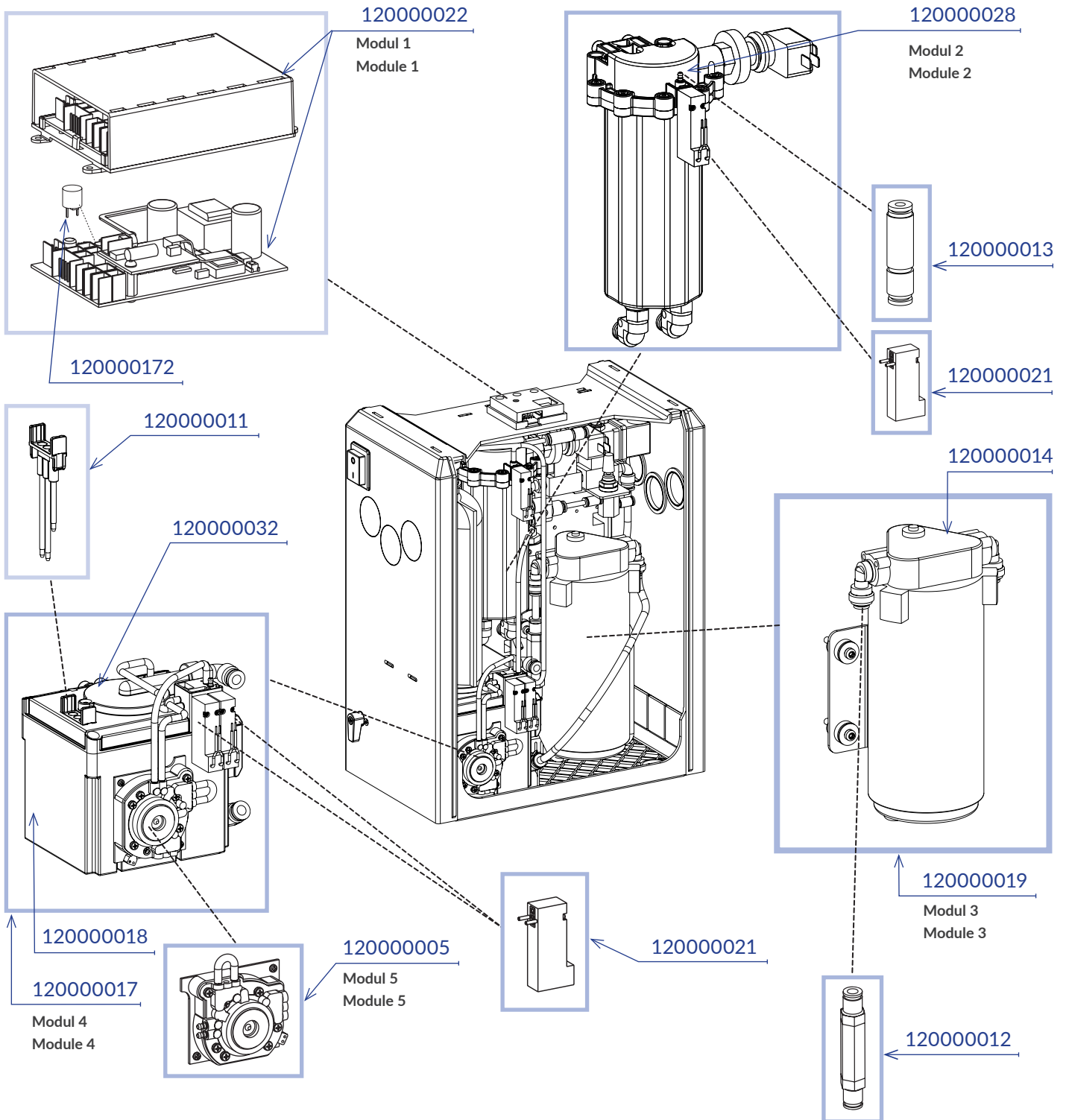
Water decontamination system WEK Light



Bestellnr. Order no.	Bezeichnung Designation
120000051	WEK Light, 1-Jahres-Wartungskit Annual inspection kit

Wassarentkeimung WEK

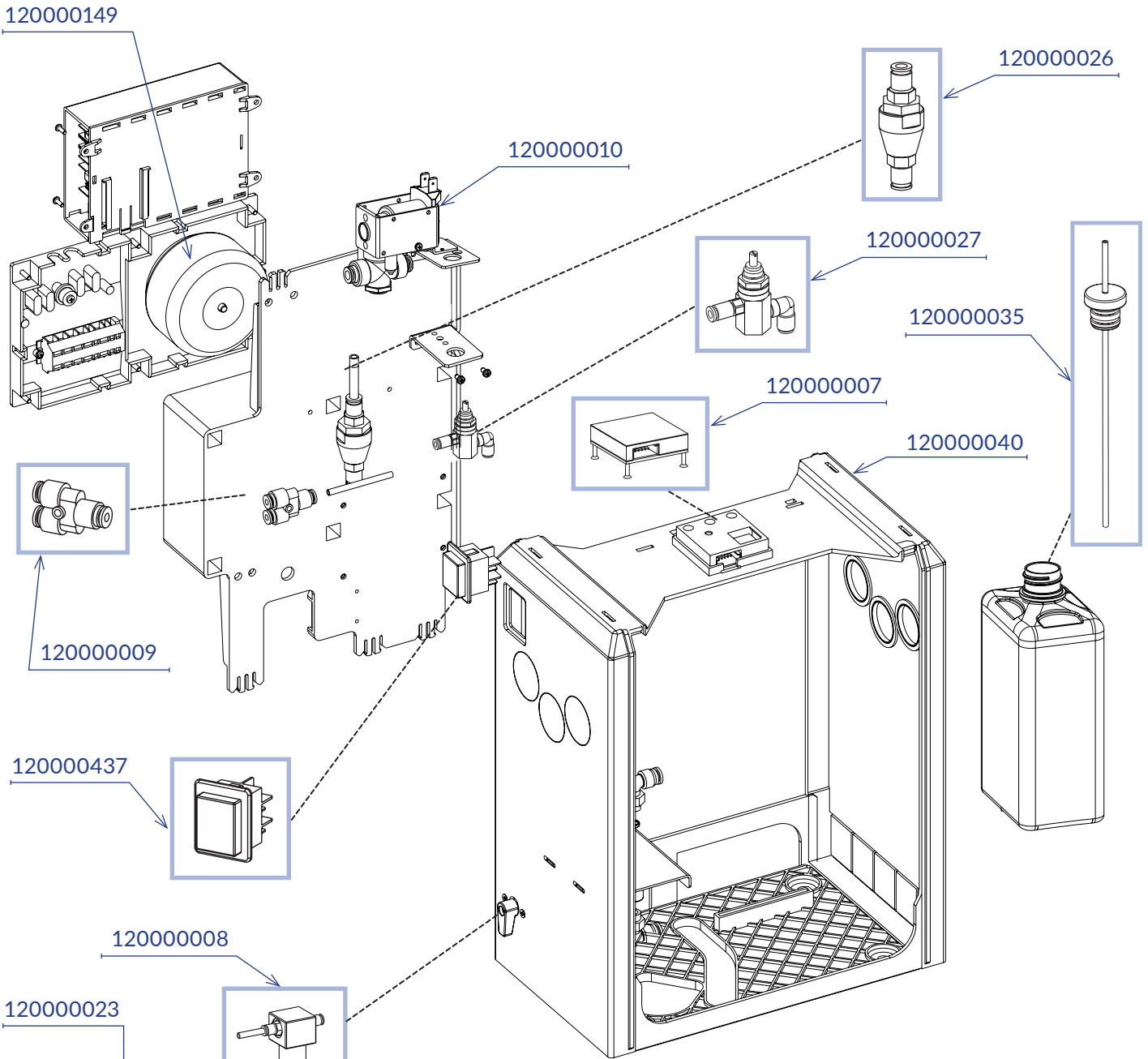
Water decontamination system WEK



Bestellnr. Order no.	Bezeichnung Designation
120000042	WEK, 1-Jahres-Wartungs-Kit Annual inspection kit
120000016	WEK, Planmeca, 1-Jahres-Wartungs-Kit Annual inspection kit
120000033	WEK, Belmont/Galbiati/Ritter, 1-Jahres-Wartungs-Kit Annual inspection kit
120000041	WEK, 3-Jahres-Wartungs-Kit 3-year inspection kit

Wasserkreinigung WEK

Water decontamination system WEK

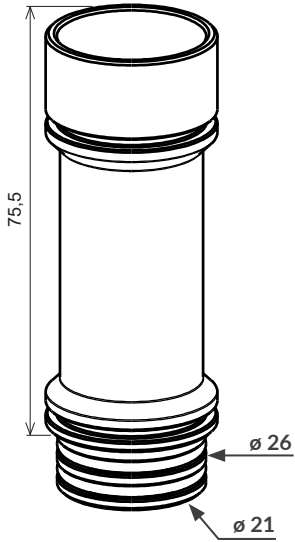


Part Number	Material	Dimensions
120000100	PVC	2 x 4 mm
120000104	PA4	4 x 6 mm
120000103	PUR	2,5 x 4 mm
120000102	PUR	2 x 4 mm
120000101	PUR4	4 x 6 mm

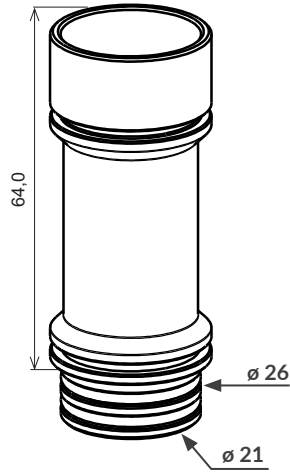
Note: A dimension line above the table indicates a length of 1 m for the hoses.

META Connect Schlauchtüllen und Adapter

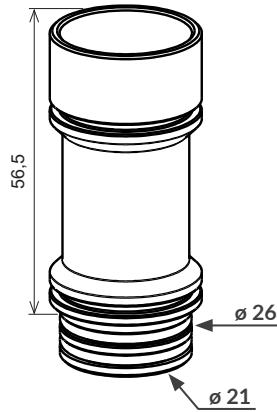
META Connect fittings and adaptors



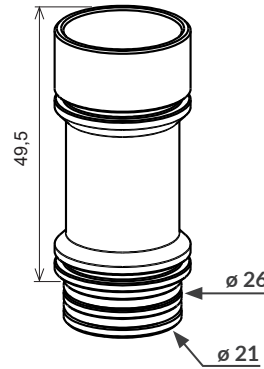
120000262



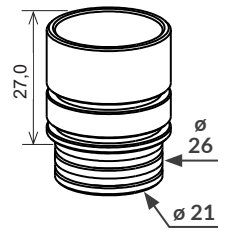
120000263



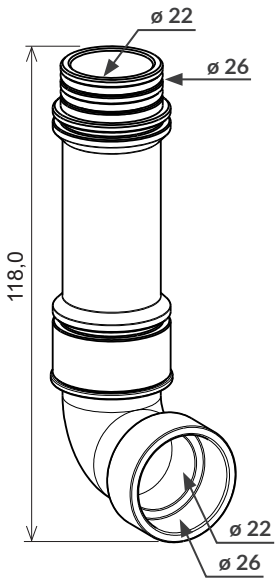
120000264



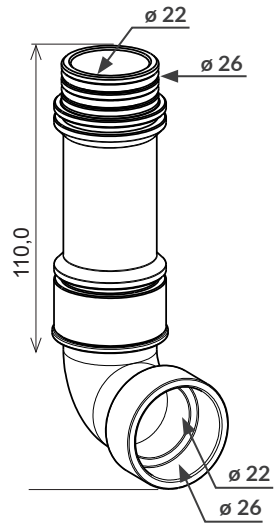
120000265



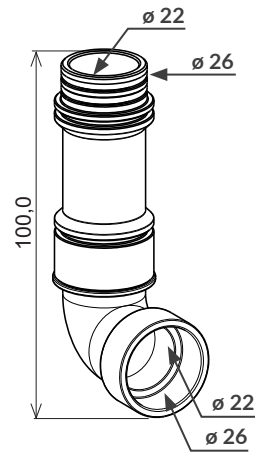
120000266



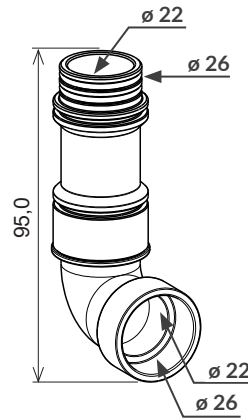
120000257



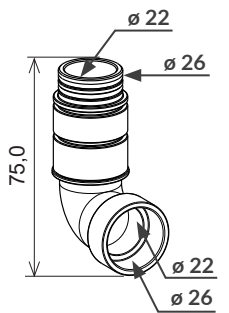
120000258



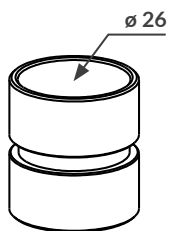
120000259



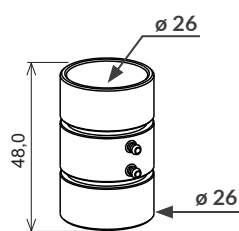
120000260



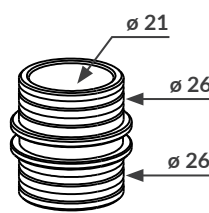
120000261



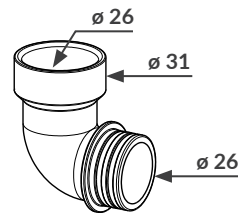
120000267



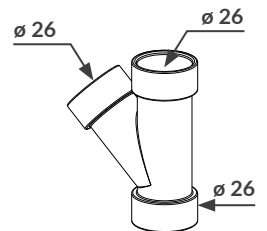
120000268



120000287



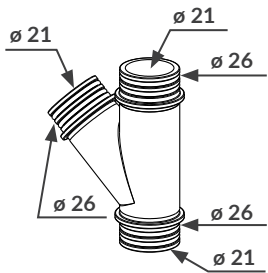
120000289



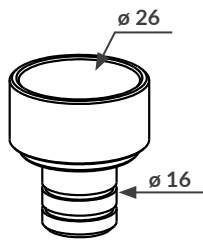
120000256

META Connect Schlauchtüllen und Adapter

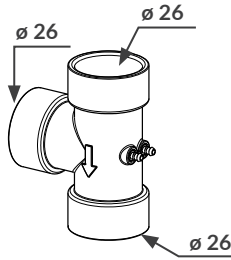
META Connect fittings and adaptors



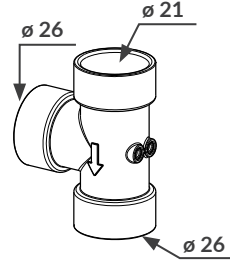
120000255



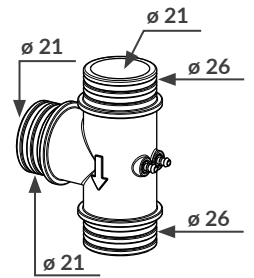
120000293



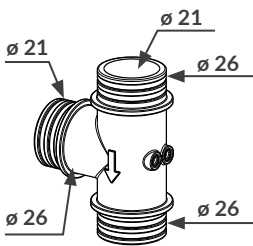
120000272



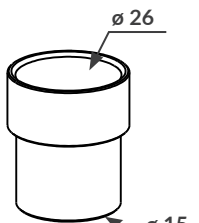
120000270



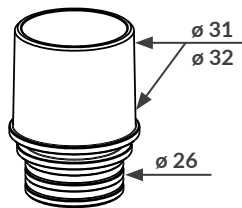
120000271



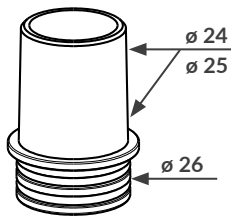
120000269



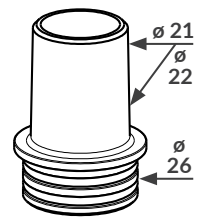
120000295



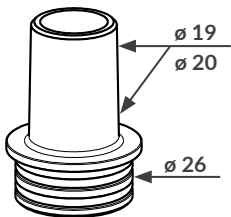
120000275



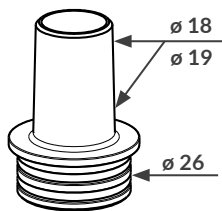
120000277



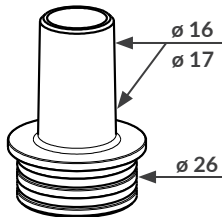
120000278



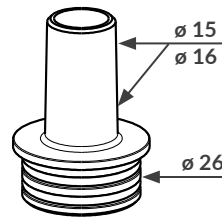
120000073



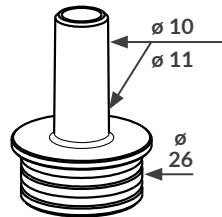
120000280



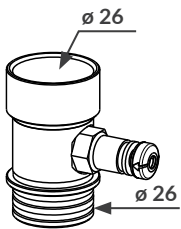
120000281



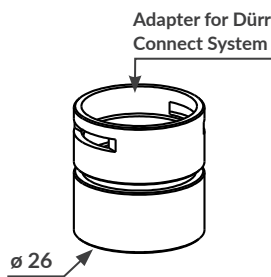
120000282



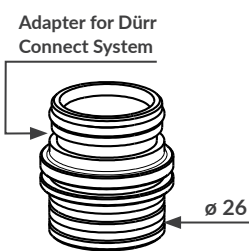
120000283



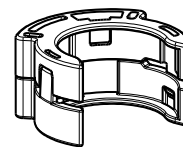
120000276



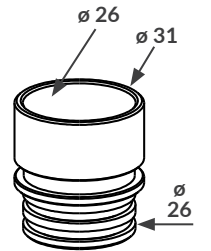
120000286



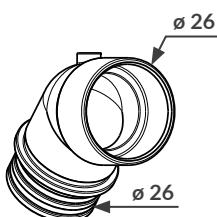
120000285



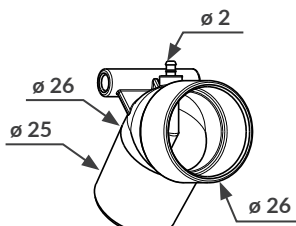
120000274



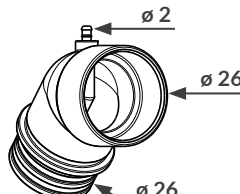
120000294



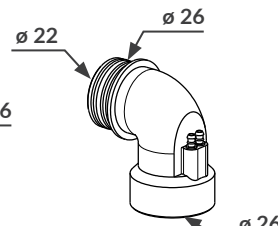
120000292



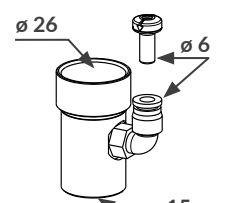
120000291



120000290



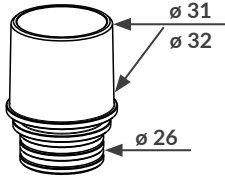
120000288



120000582

Schlauchtüllen und Adapter mit META Connect kombinierbar

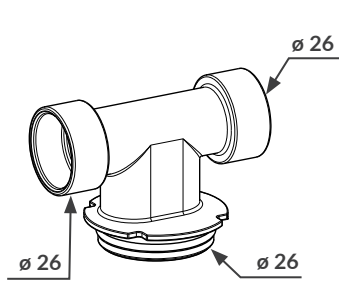
Fittings and adaptors combinable with META Connect



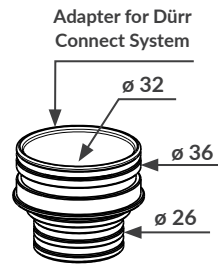
120000079



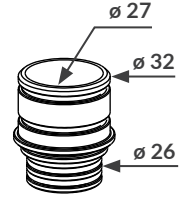
120000060



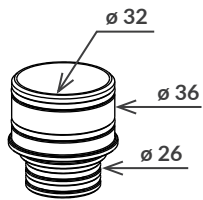
120000059



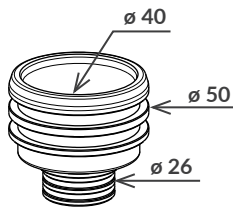
120000084



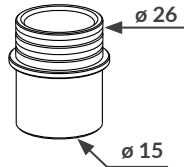
120000087



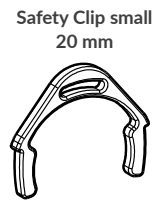
120000086



120000085



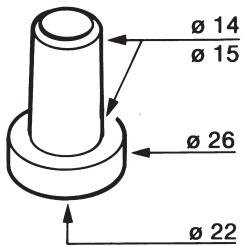
40010129



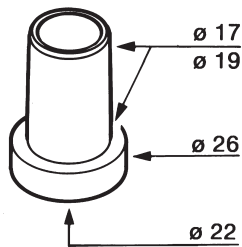
40010122

Schlauchtüllen und Adapter mit META Connect nicht kombinierbar

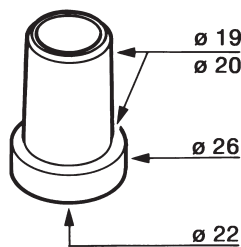
Fittings and adaptors not combinable with META Connect



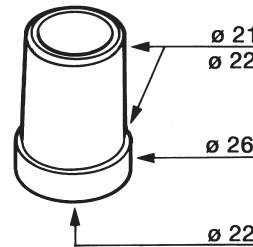
120000067



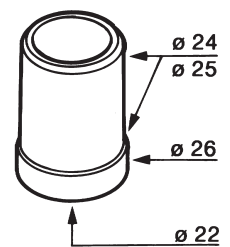
120000066



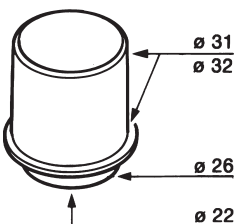
120000065



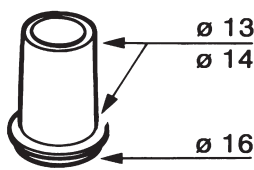
120000064



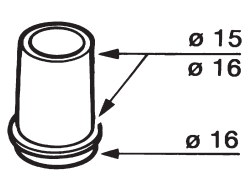
120000063



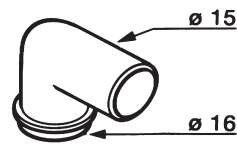
120000070



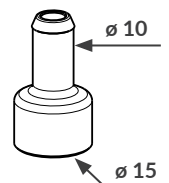
120000069



120000068



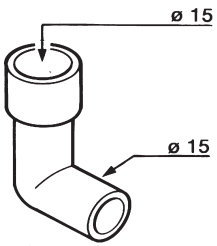
120000062



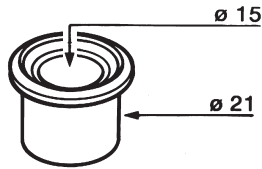
120000091

Schlauchtüllen und Adapter mit META Connect nicht kombinierbar

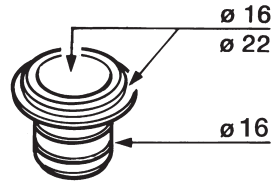
Fittings and adaptors not combinable with META Connect



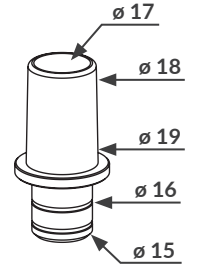
120000057



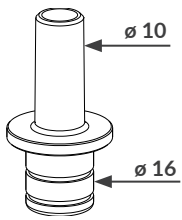
120000061



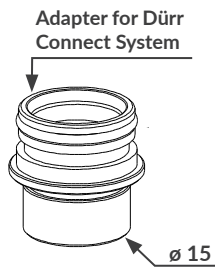
120000088



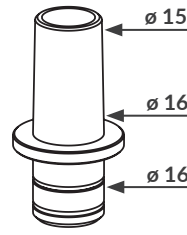
120000074



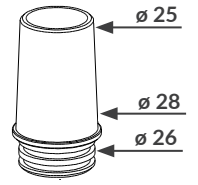
120000077



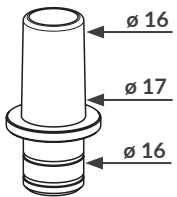
120000081



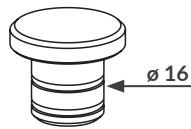
120000076



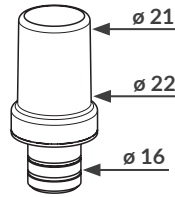
120000080



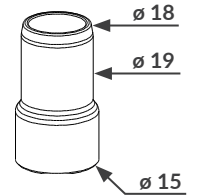
120000075



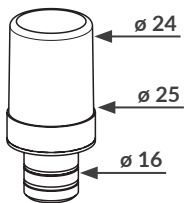
120000083



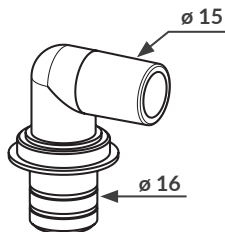
120000072



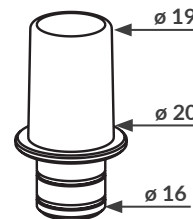
120000090



120000071



120000078

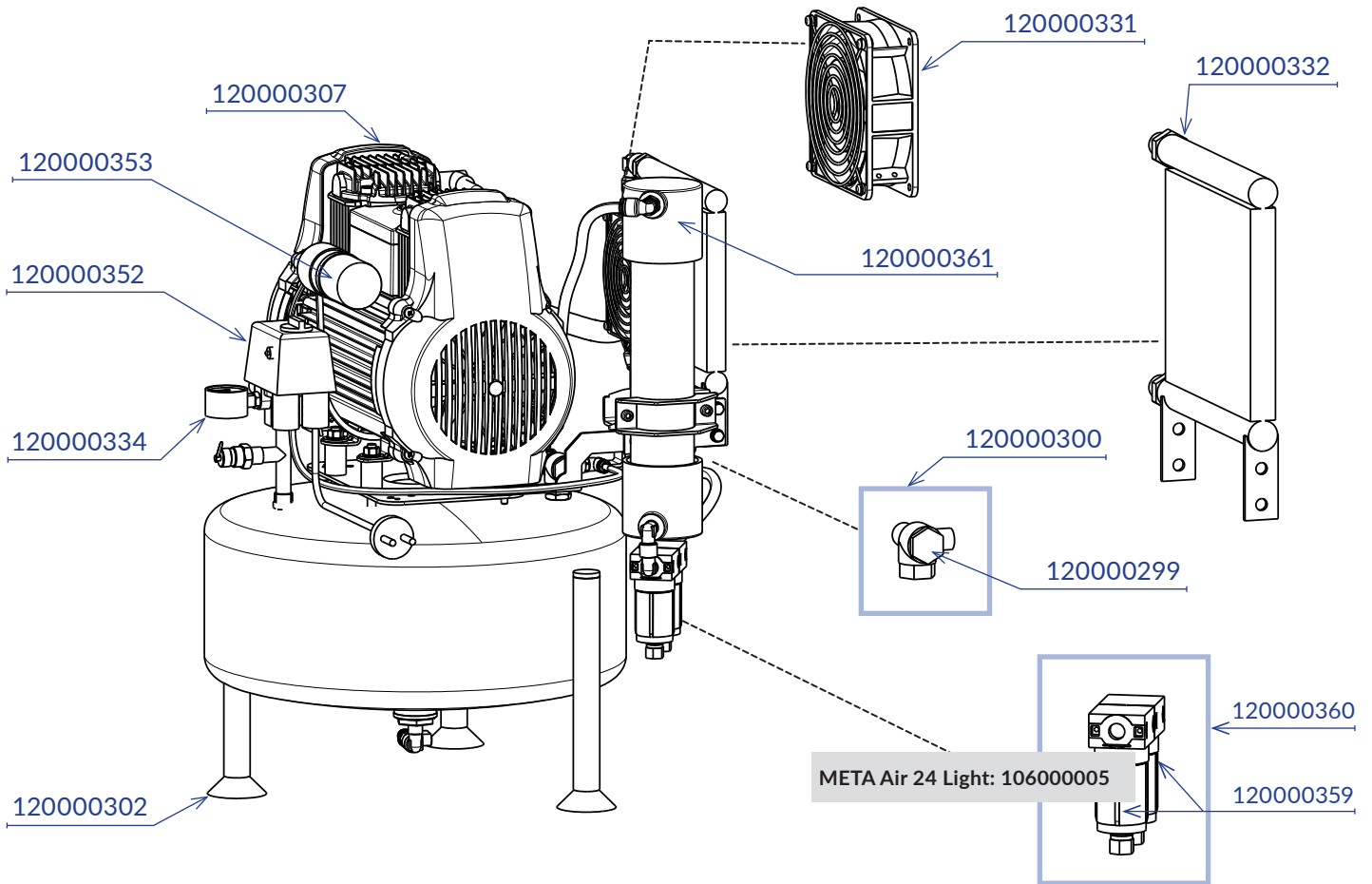


120000073

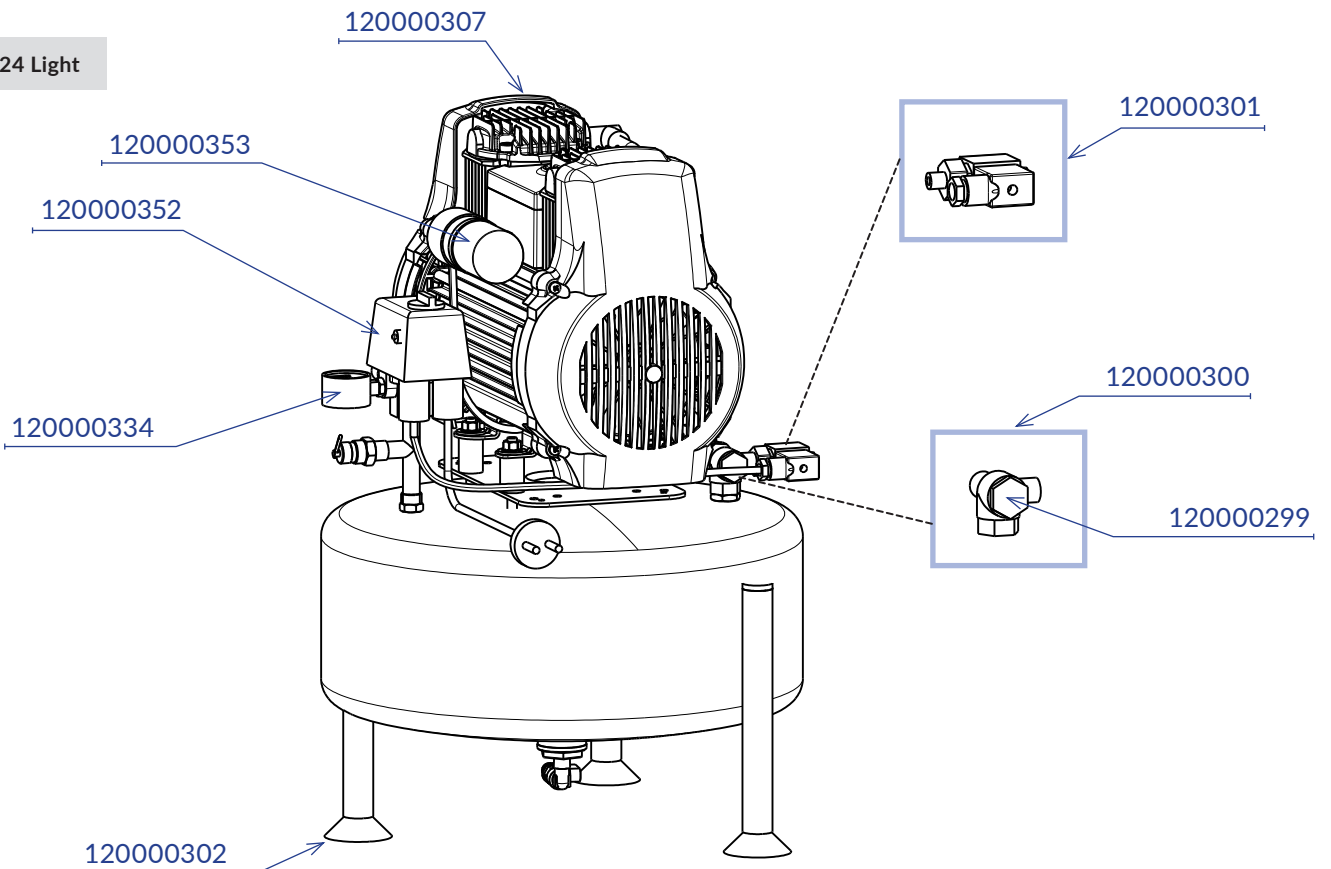
Kompressoren META Air 24 / Air 24 Light

Compressors META Air 24 / Air 24 Light

META Air 24



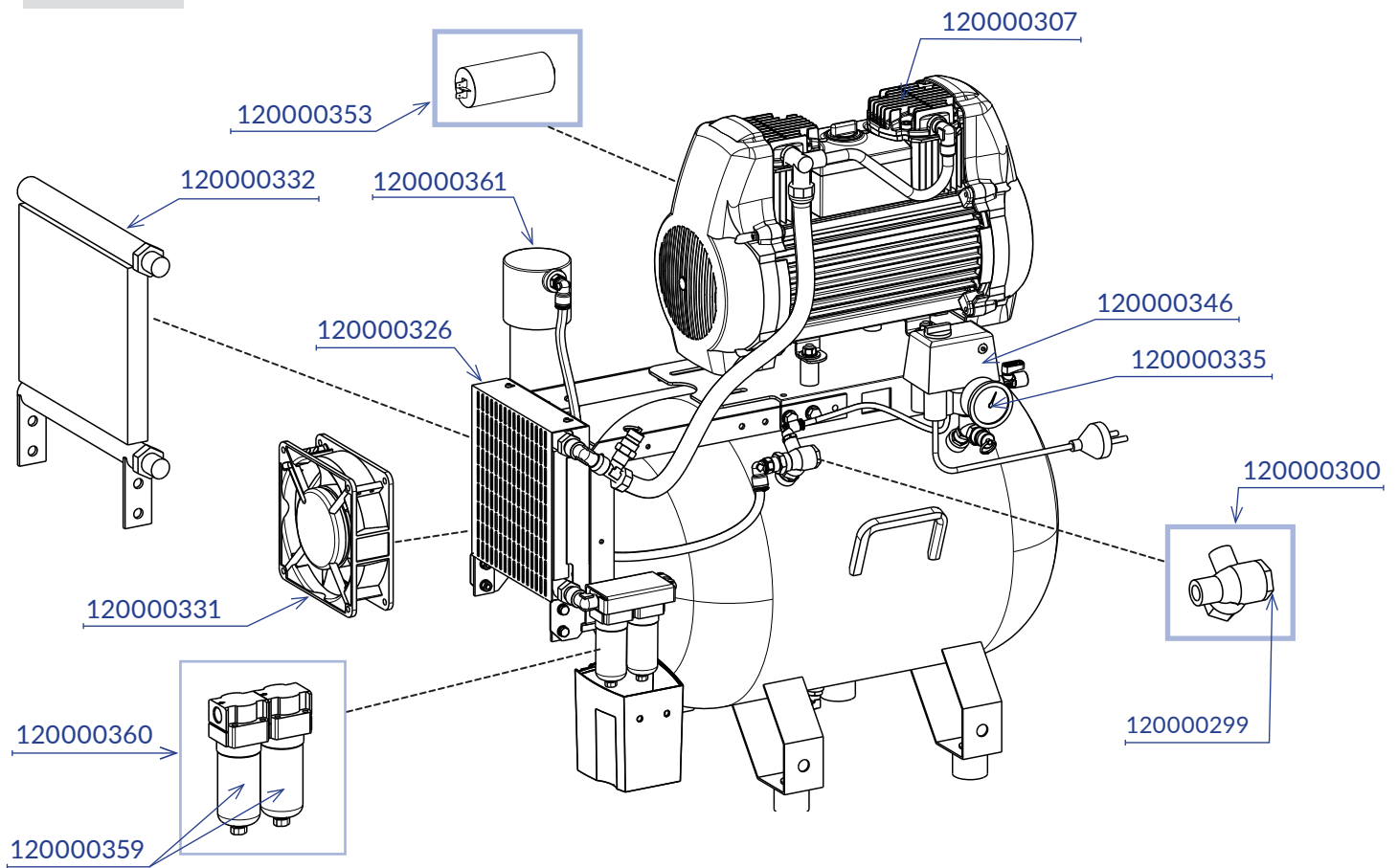
META Air 24 Light



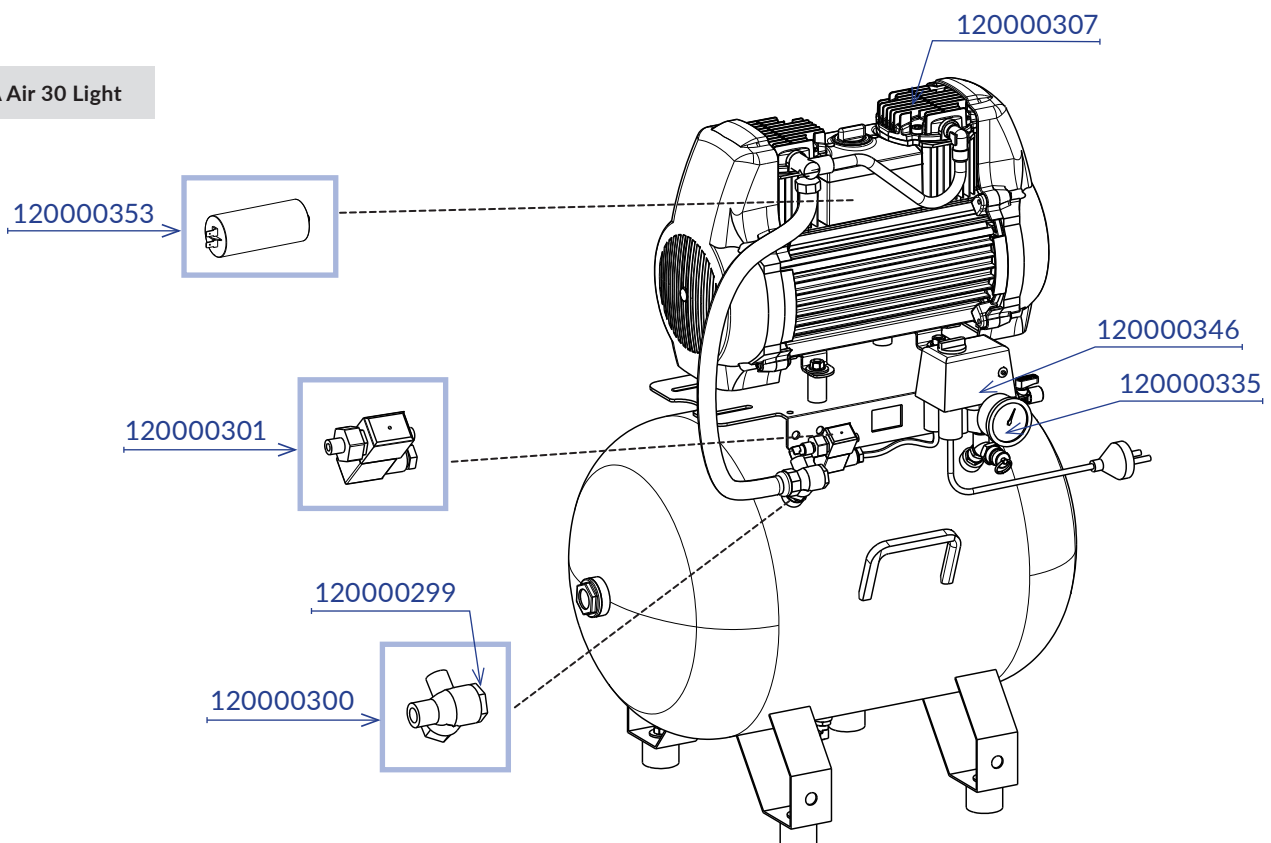
Kompressoren META Air / Air Light 30

Compressors META Air / Air Light 30

META Air 30



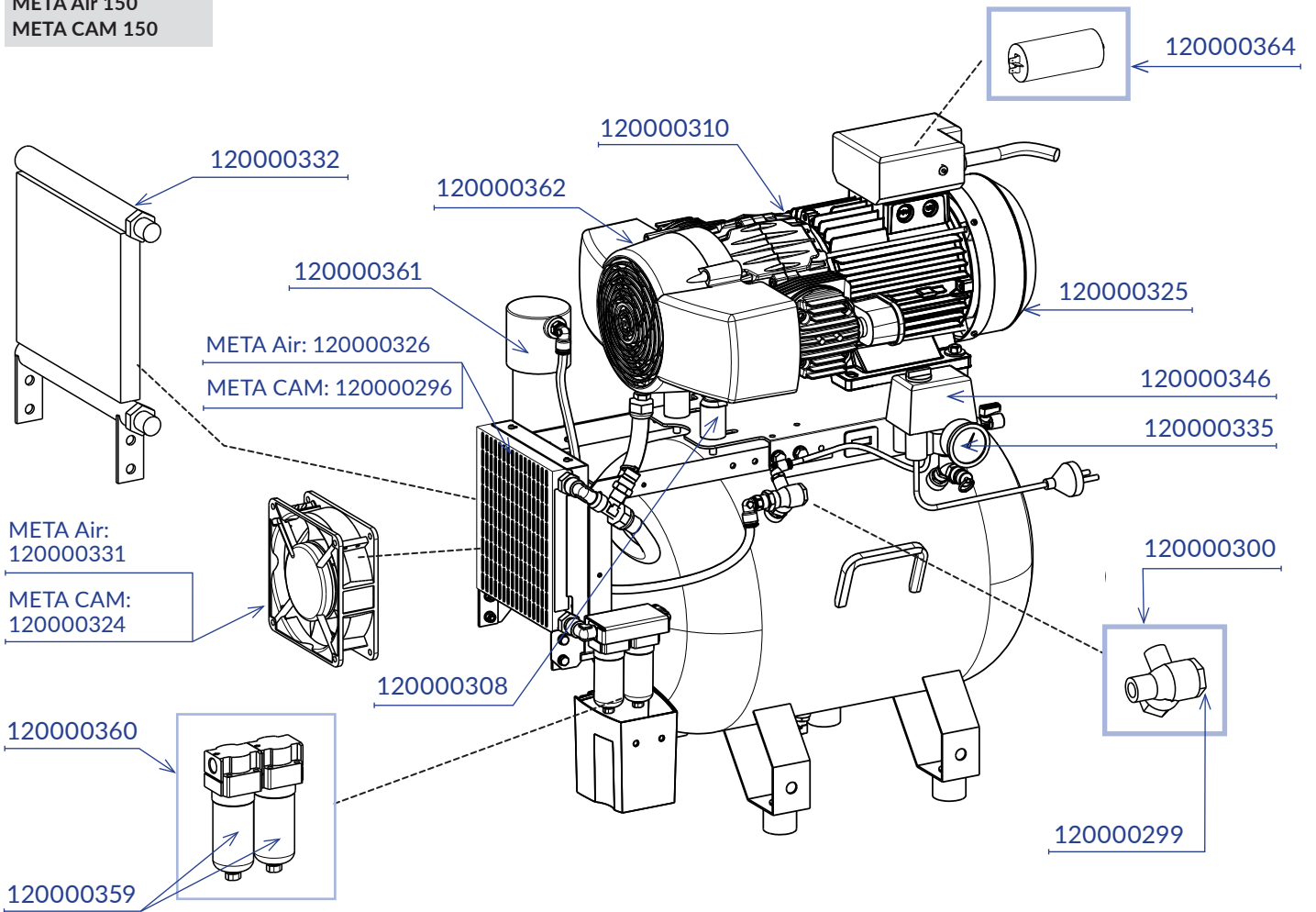
META Air 30 Light



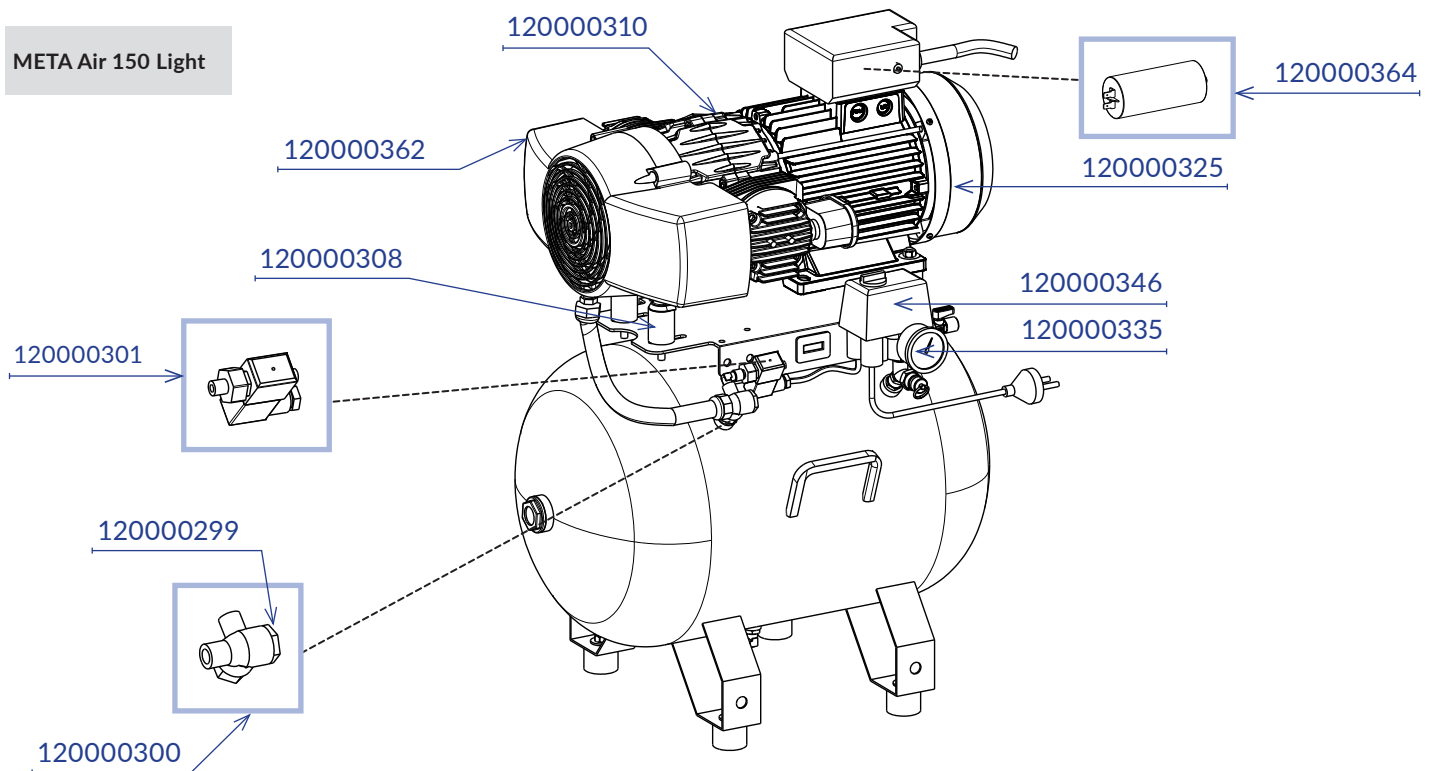
Kompressoren META Air / Air Light / CAM 150

Compressors META Air / Air Light / CAM 150

META Air 150
META CAM 150



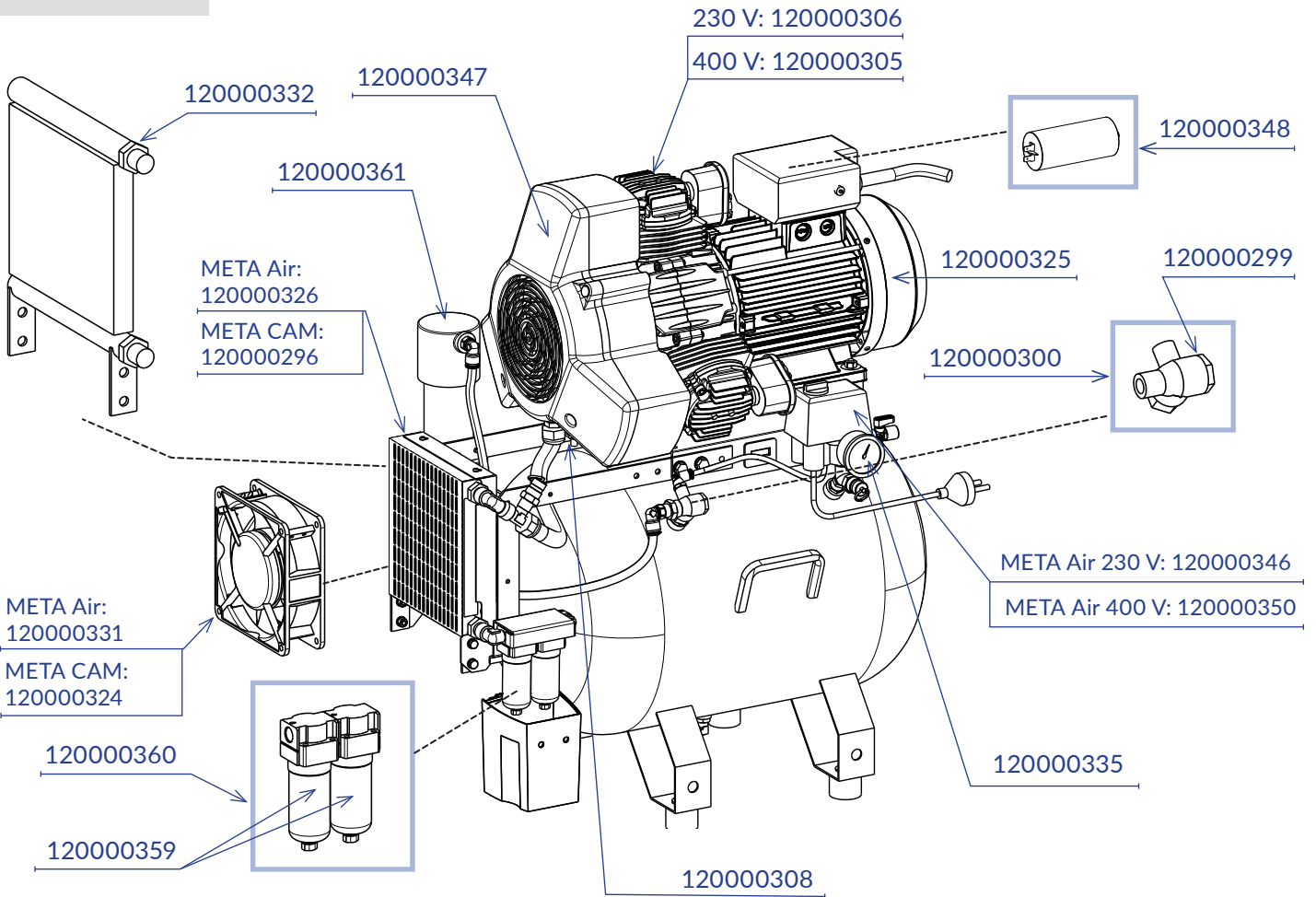
META Air 150 Light



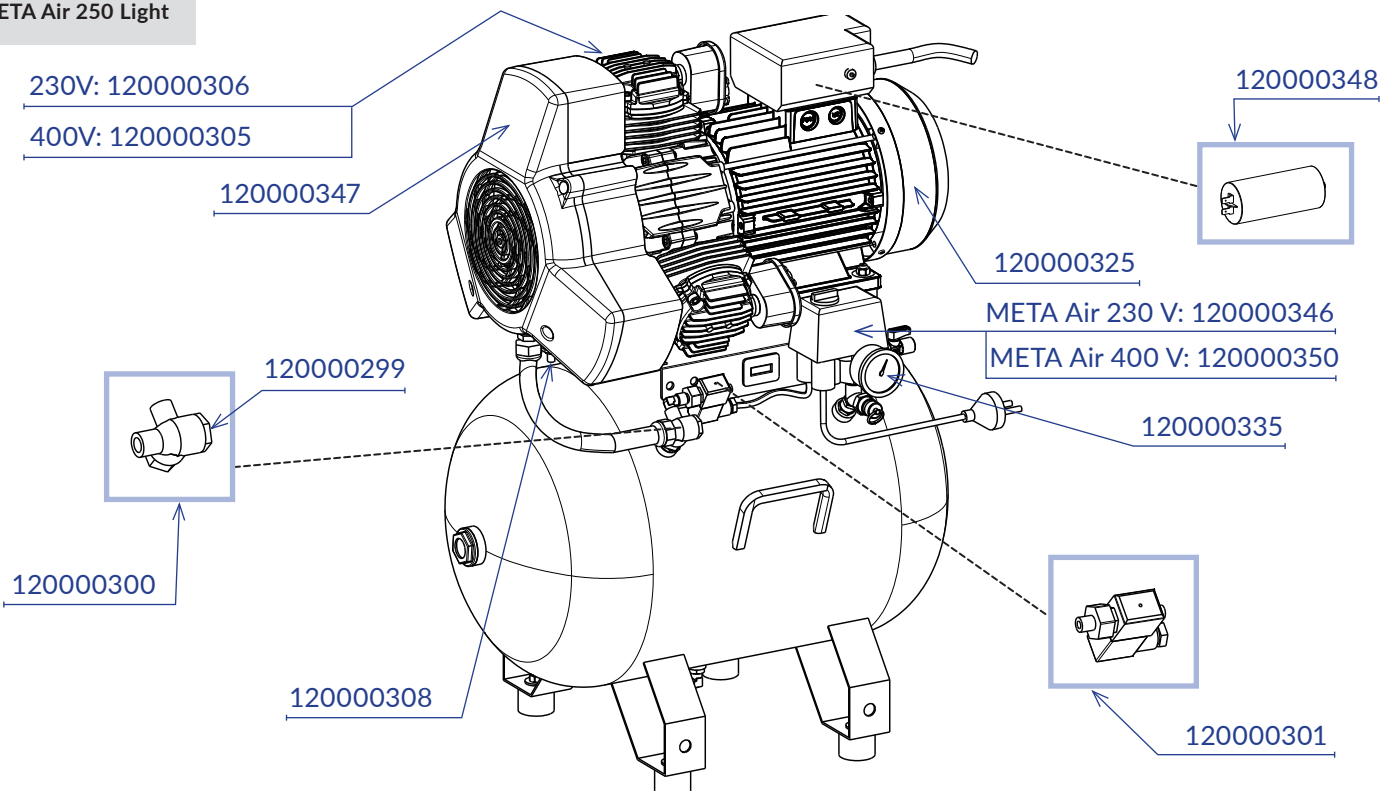
Kompressoren META Air / Air Light / CAM 250

Compressors META Air / Air Light / CAM 250

META Air 250
META CAM 250



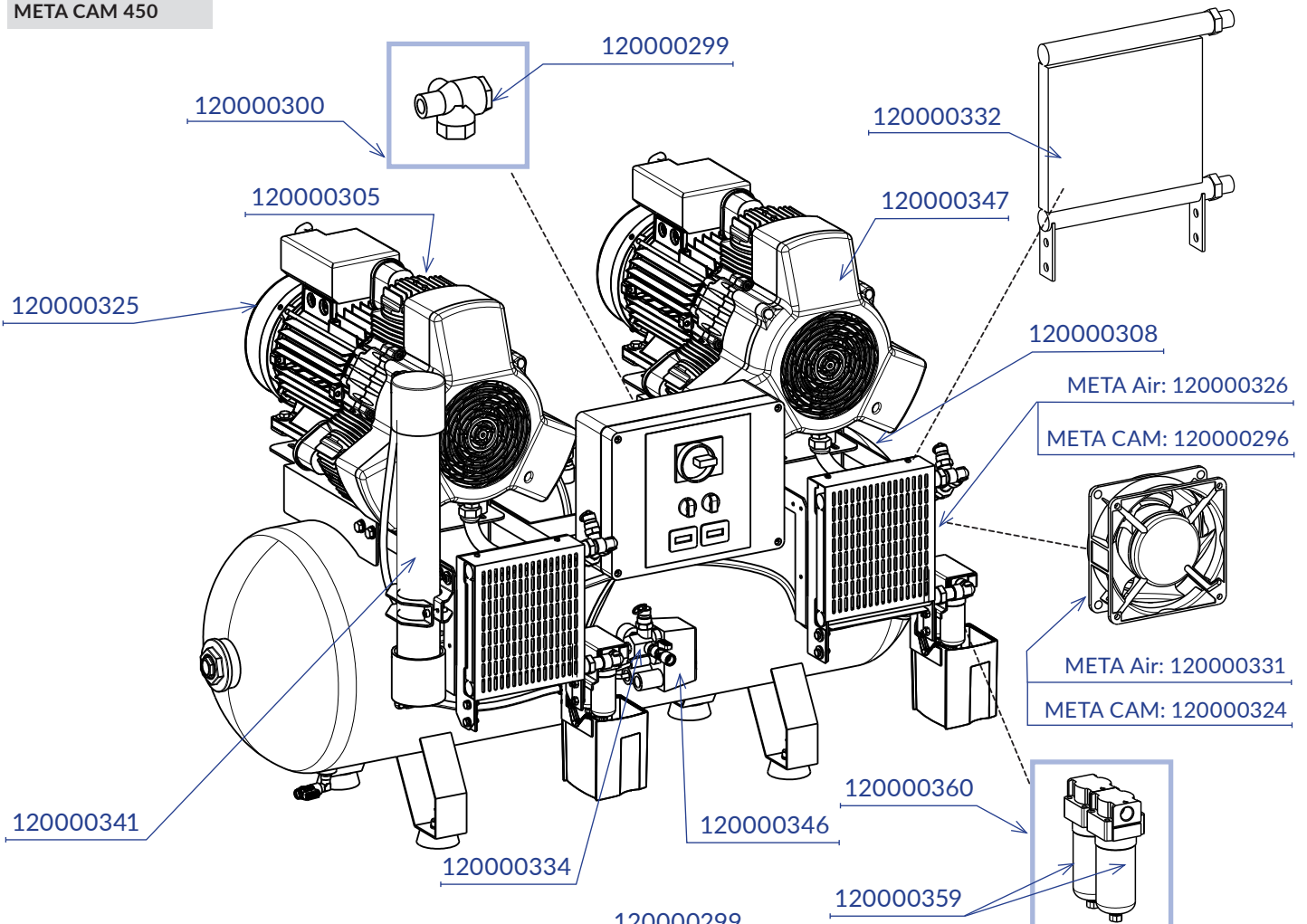
META Air 250 Light



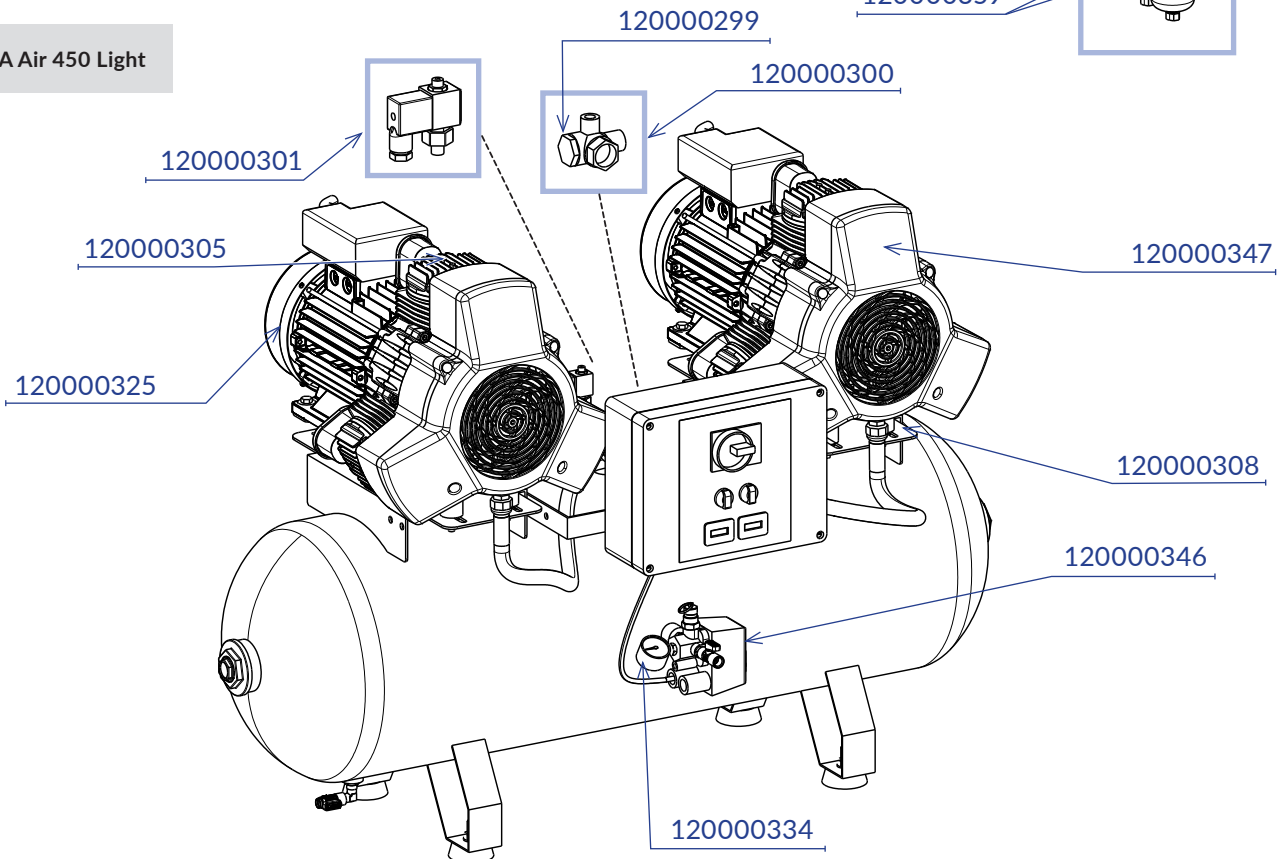
Kompressoren META Air / Air Light / CAM 450

Compressors META Air / Air Light / CAM 450

META Air 450
META CAM 450



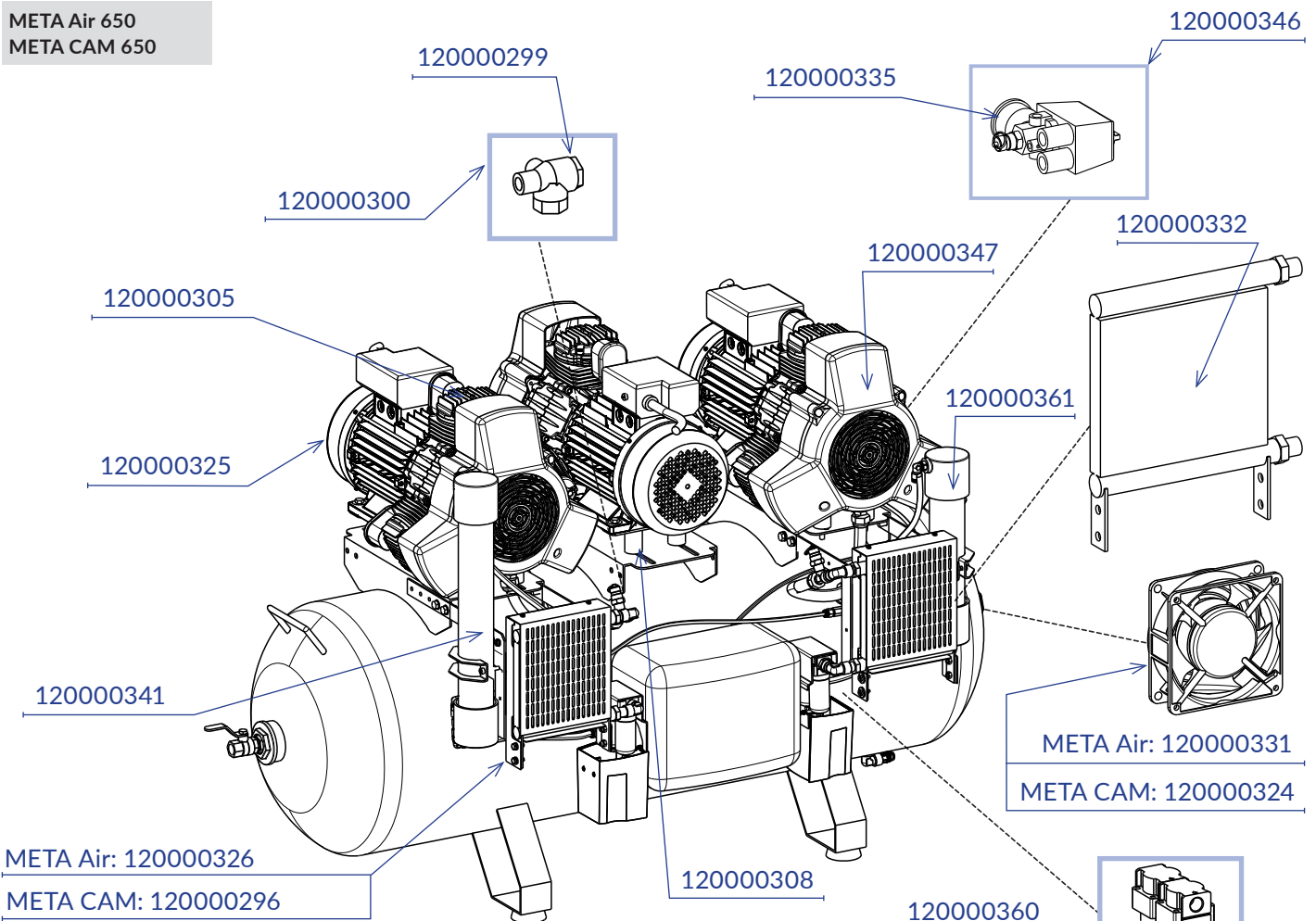
META Air 450 Light



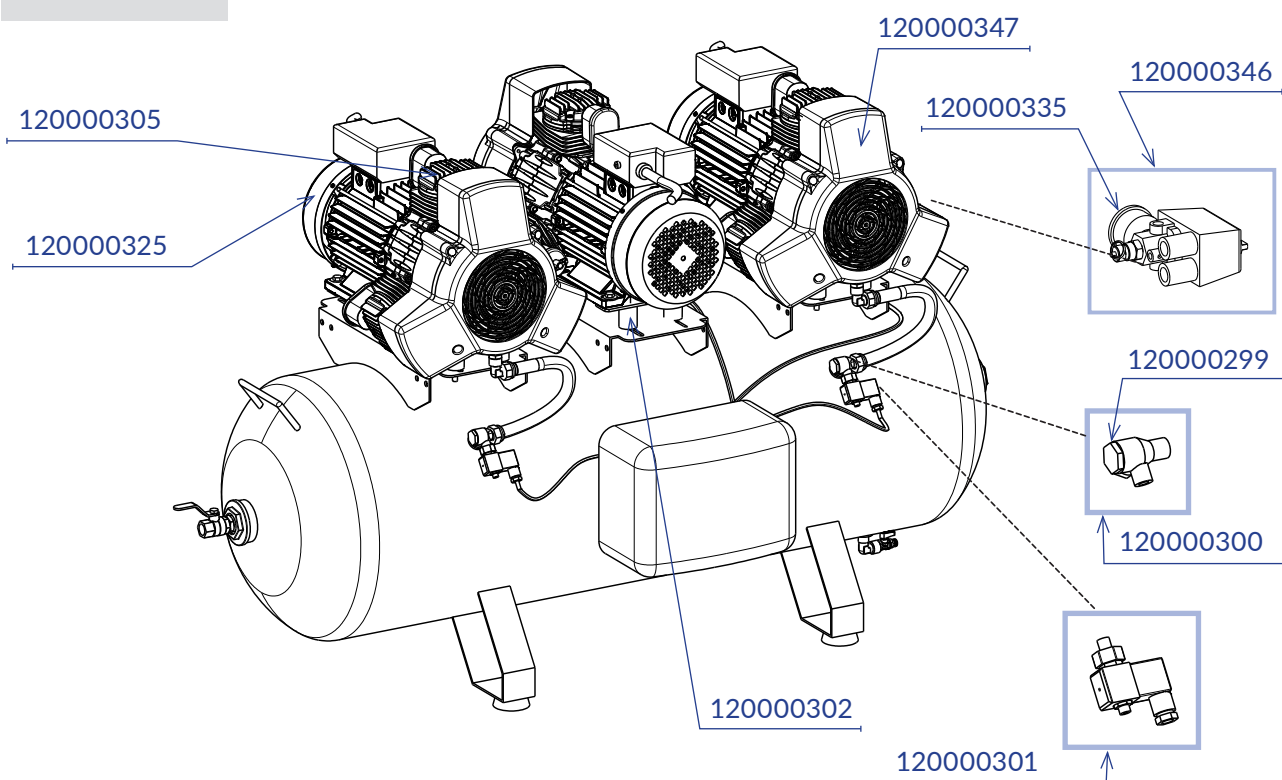
Kompressoren META Air / Air Light / CAM 650

Compressors META Air / Air Light / CAM 650

META Air 650
META CAM 650

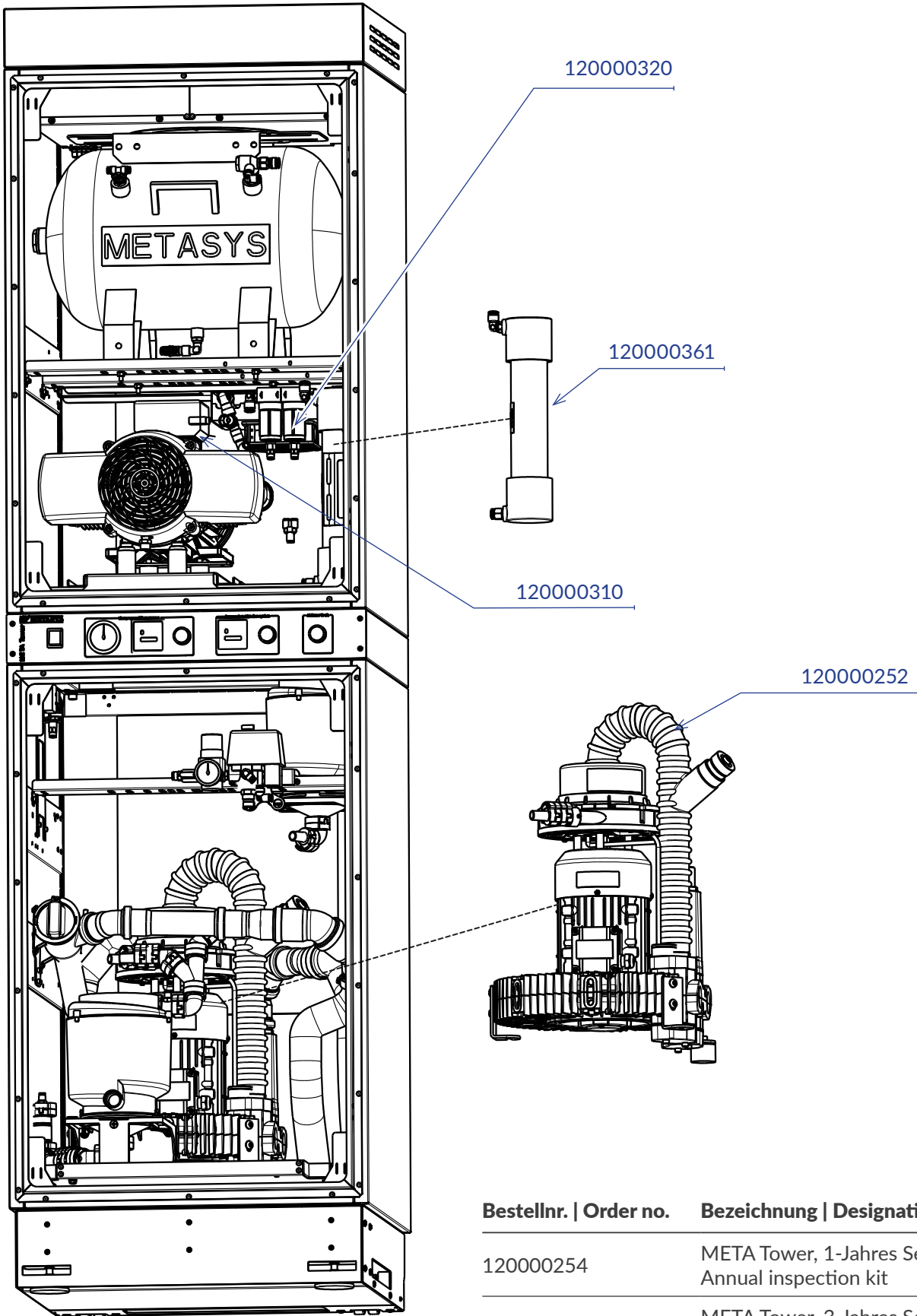


META Air 650 Light



META Tower 2 / A2

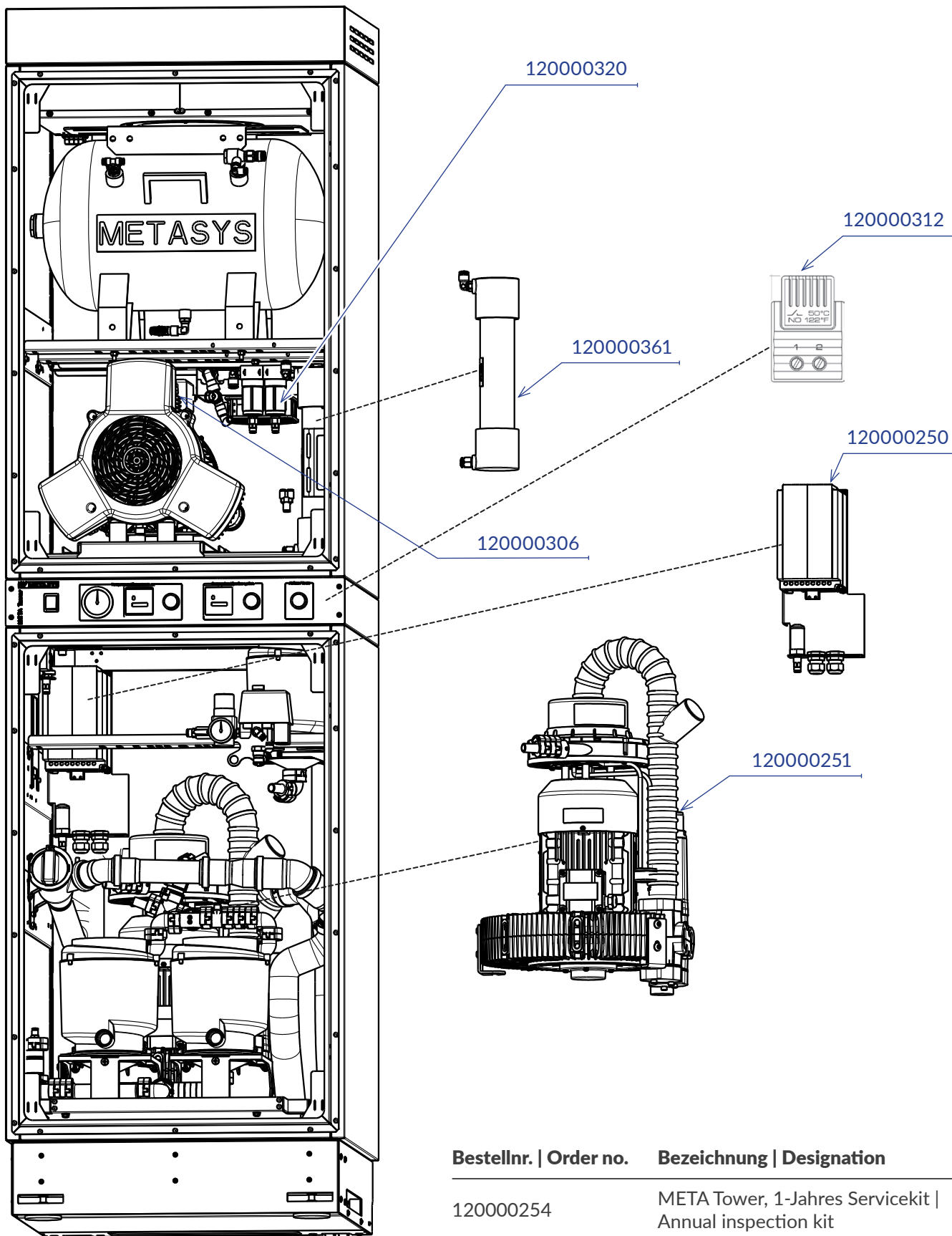
META Tower 2 / A2



Bestellnr. Order no.	Bezeichnung Designation
120000254	META Tower, 1-Jahres Servicekit Annual inspection kit
120000253	META Tower, 3-Jahres Servicekit 3-year inspection kit

META Tower 5 / A5

META Tower 5 / A5



Bestellnr. Order no.	Bezeichnung Designation
120000254	META Tower, 1-Jahres Servicekit Annual inspection kit
120000253	META Tower, 3-Jahres Servicekit 3-year inspection kit

Service- und Austauschkits

Service and replacement kits

WEK / WEK Light

Bestell-Nr. NEU Order no. NEW	Bestell-Nr. ALT Order no. OLD	Artikelbezeichnung	Item description
120000016	50050128	ET WEK, Planmeca, 1-Jahres-Wartungs-Kit, Hygiene-Set	ET WEK, Planmeca, annual inspection kit, hygiene kit
120000033	50050130	ET WEK, Blemont/Galbiati/Ritter, 1-Jahres-Wartungs-Kit	ET WEK, Belmont/Galbiati/Ritter, annual inspection kit
120000034	50050137	ET WEK, Belmont/Galbiati/Ritter, 3-Jahres-Wartungs-Kit	ET WEK, Belmont/Galbiati/Ritter, 3-year inspection kit
120000041	50050134	ET WEK, 3-Jahres-Wartungs-Kit, Hygiene-Set	ET WEK, 3-year inspection kit, hygiene kit
120000042	50050115	ET WEK, 1-Jahres-Wartungs-Kit, Hygiene-Set	ET WEK, annual inspection kit, hygiene kit
120000051	50050126	ET WEK Light, 1-Jahres-Wartungs-Kit, Hygiene-Set	ET WEK Light, annual inspection kit, hygiene kit

MULTI SYSTEM TYP 1 / MULTI SYSTEM TYP 1 ECO Light

Bestell-Nr. NEU Order no. NEW	Bestell-Nr. ALT Order no. OLD	Artikelbezeichnung	Item description
120000228	50020110-DE	ET MST 1, 5-Jahres Wartungs-Kit, DE	ET MST 1, 5-year inspection kit, DE
120000229	50020110	ET MST 1, 5-Jahres Wartungs-Kit	ET MST 1, 5-year inspection kit
120000230	50020114	ET MST 1, 1-Jahres-Wartungs-Kit, Magnetventil	ET MST 1, annual inspection kit, magnetic valve
120000231	50020111-DE	ET MST 1, 1-Jahres-Wartungs-Kit, Hygiene-Set DE	ET MST 1, annual inspection kit, hygiene kit DE
120000232	50020111	ET MST 1, 1-Jahres-Wartungs-Kit, Hygiene-Set	ET MST 1, annual inspection kit, hygiene kit
120000233	50020118	ET MST 1, 1-Jahres-Wartungs-Kit, FI	ET MST 1, annual inspection kit, FI
120000234	50020109-DE	ET MST 1, 1-Jahres Wartungs-Kit, DE	ET MST 1, annual inspection kit, DE
120000235	50020109	ET MST 1, 1-Jahres Wartungs-Kit	ET MST 1, annual inspection kit
120000248	50020112	ET MST 1 ECO Light, 1-Jahres-Wartungs-Kit, Hygiene-Set	ET MST 1 ECO Light, annual inspection kit, hygiene kit
120000249	50020119	ET MST 1 ECO Light, 1-Jahres-Wartungs-Kit	ET MST 1 ECO Light, annual inspection kit
120000177	50020065	ET MST 1, Rückschlagventil Zentrifugen-Pumpe	ET MST 1, non-return valve centrifuge pump

META Tower

Bestell-Nr. NEU Order no. NEW	Bestell-Nr. ALT Order no. OLD	Artikelbezeichnung	Item description
120000253	20020471	ET META Tower, 3-Jahres Servicekit	ET META Tower, 3-year inspection kit
120000254	20020470	ET META Tower, 1-Jahres Servicekit	ET META Tower, annual inspection kit

META Air / Air Light / CAM

Bestell-Nr. NEU Order no. NEW	Bestell-Nr. ALT Order no. OLD	Artikelbezeichnung	Item description
120000297	50082062	ET META CAM 450, Upgrade Kit V3 auf V4	ET META CAM 450, upgrade kit V3 to V4
120000298	50082061	ET META CAM 250, Upgrade Kit V3 auf V4	ET META CAM 250, upgrade kit V3 to V4
120000309	50080173	ET META Air/Light 150/250, Filterpatronen Austauschkit	ET META Air/Light 150/250, filter cartridge replacement kit
120000314	50080176	ET META Air/CAM 650, Filterpatronen Austauschkit	ET META Air/CAM 650, filter cartridge replacement kit
120000315	50080169	ET META Air/CAM 650, 3000 Stunden-Kit	ET META Air/CAM 650, 3000 h service kit
120000316	50080172	ET META Air/CAM 450, Filterpatronen Austauschkit	ET META Air/CAM 450, filter cartridge replacement kit
120000317	50080168	ET META Air/CAM 450, 3000 Stunden-Kit	ET META Air/CAM 450, 3000 h service kit
120000319	50080167	ET META Air/CAM 250, 3000 Stunden-Kitm Ventilblock	ET META Air/CAM 250, 3000 h service kit, valve block

120000320	50080171	ET META Air/CAM 150/250, Filterpatronen Austauschkit	ET META Air/CAM 150/250, filter cartridge replacement kit
Bestell-Nr. NEU Order no. NEW	Bestell-Nr. ALT Order no. OLD	Artikelbezeichnung	Item description
120000322	50080166	ET META Air/CAM 150, 3000 Stunden-Kit	ET META Air/CAM 150, 3000 h service kit
120000328	50080184	ET META Air Light 24/30, 1500 Stunden-Kit	ET META Air Light 24/30, 1500 h service kit
120000329	50080178	ET META Air 900, Filterpatronen Austauschkit	ET META Air 900, filter cartridge replacement kit
120000330	50080190	ET META Air 900, 3000 Stunden-Kit	ET META Air 900, 3000 h service kit
120000339	50080177	ET META Air 650 Light, Filterpatronen Austauschkit	ET META Air 650 Light, filter cartridge replacement kit
120000340	50080182V3	ET META Air 650 Light, 3000 Stunden-Kit, Ventilblock	ET META Air 650 Light, 3000 h service kit, valve block
120000343	50080174	ET META Air 450 Light, Filterpatronen Austauschkit	ET META Air 450 Light, filter cartridge replacement kit
120000344	50080181V3	ET META Air 450 Light, 3000 Stunden-Kit, Ventilblock	ET META Air 450 Light, 3000 h service kit, valve block
120000345	40080007	ET META Air 30-450, Anschlusskit Druckluftausgang	ET META Air 30-450, compressed air outlet connection kit
120000351	50080180V3	ET META Air 250 Light, 3000 Stunden-Kit, Ventilblock	ET META Air 250 Light, 3000 h service kit, valve block
120000354	50082049	ET META Air 24/30, Kolbenaustausch-Kit, komplett, Dichtung	ET META Air 24/30, piston replacement kit, complete, sealing
120000355	50080170	ET META Air 24/30, Filterpatronen Austauschkit	ET META Air 24/30, filter cartridge replacement kit
120000356	50080160	ET META Air 24/30, 1500 Stunden-Kit	ET META Air 24/30, 1500 h service kit
120000365	50080179V3	ET META Air 150 Light, 3000 Stunden-Kit, Ventilblock	ET META Air 150 Light, 3000 h service kit, valve block

H1 / S1

Bestell-Nr. NEU Order no. NEW	Bestell-Nr. ALT Order no. OLD	Artikelbezeichnung	Item description
120000372	50010062	ET H1, Wartungs-Kit	ET H1, inspection kit
120000387	50010032	ET H1, Reparatursatz Platzwahlventil	ET H1, place selection valve repair kit
120000118	50010036	ET S1, Reparatursatz Platzwahlventil	ET S1, place selection valve repair kit

EXCOM hybrid

Bestell-Nr. NEU Order no. NEW	Bestell-Nr. ALT Order no. OLD	Artikelbezeichnung	Item description
120000469	50060210	ET EXCOM hybrid, Austauschkit	ET EXCOM hybrid, replacement kit
120000481	50060223	ET EXCOM hybrid 5, Wartungs-Kit Druckabnahme FU, 230/400 V	ET EXCOM hybrid 5, inspection kit pressure reduct., 230/400 V
120000490	50060241	ET EXCOM hybrid 5, 1-Jahres-Wartungs-Kit	ET EXCOM hybrid 5, annual inspection kit
120000527	50060240	ET EXCOM hybrid 1/2, 1-Jahres-Wartungs-Kit	ET EXCOM hybrid 1/2, annual inspection kit

COMPACT Dynamic

Bestell-Nr. NEU Order no. NEW	Bestell-Nr. ALT Order no. OLD	Artikelbezeichnung	Item description
120000593	50040031-DE	ET COMPACT Dynamic, 5-Jahres Wartungs-Kit, DE	ET COMPACT Dynamic, 5-year inspection kit, DE
120000594	50040031	ET COMPACT Dynamic, 5-Jahres Wartungs-Kit	ET COMPACT Dynamic, 5-year inspection kit
120000595	50040034-DE	ET COMPACT Dynamic, 1-Jahres Wartungs-Kit, Hygiene-Set, DE	ET COMPACT Dynamic, annual inspection kit, hygiene kit, DE
120000596	50040034	ET COMPACT Dynamic, 1-Jahres Wartungs-Kit, Hygiene-Set	ET COMPACT Dynamic, annual inspection kit, hygiene kit
120000597	50040030-DE	ET COMPACT Dynamic, 1-Jahres Wartungs-Kit, DE	ET COMPACT Dynamic, annual inspection kit, DE
120000598	50040030	ET COMPACT Dynamic, 1-Jahres Wartungs-Kit	ET COMPACT Dynamic, annual inspection kit



protect what you need



METASYS Medizintechnik GmbH

Florianstraße 3 | 6063 Rum bei Innsbruck | Austria

T +43512 205420 | info@metasys.com | metasys.com